

## Corporate Cash and Employment<sup>†</sup>

By PHILIPPE BACCHETTA, KENZA BENHIMA, AND CÉLINE POILLY\*

*In the aftermath of the US financial crisis, both a sharp drop in employment and a surge in corporate cash have been observed. In this paper, based on US data, we argue that the negative relationship between the corporate cash ratio and employment is systematic, both over time and across firms. We develop a dynamic general equilibrium model where heterogeneous firms need cash and external liquid funds in their production process. We analyze the dynamic impact of aggregate shocks and the cross-firm impact of idiosyncratic shocks. We show that external liquidity shocks generate a negative comovement between the cash ratio and employment, as documented in the data. (JEL E24, E32, G32, J23)*

In the aftermath of the US financial crisis, both a sharp decline in employment and an accumulation of cash held by firms have been observed. While both variables are part of firms' decisions, they are typically not considered jointly in the literature. To what extent are these two features related? Holding liquid assets facilitates the firm's ability to pay for the wage bill. But employment and cash decisions also react to changes in firms' environment, e.g., changes in credit conditions. Therefore, examining these two variables jointly sheds light on the role of financial shocks on employment, especially during the crisis. The contribution of this paper is twofold. First, it provides stylized facts on the relationship between the corporate cash position and employment. Second, it delivers an explanation to the empirical evidence by building a tractable dynamic general equilibrium framework, including both cash and employment decisions. This framework sheds a new light on the impact of financial shocks by focusing on firms' external liquidity.

\* Bacchetta: HEC Lausanne and Swiss Finance Institute, Internef 523, University of Lausanne, 1015 Lausanne, Switzerland (email: philippe.bacchetta@unil.ch); Benhima: Internef 522, University of Lausanne, 1015 Lausanne, Switzerland (email: kenza.benhima@unil.ch); Poilly: Aix-Marseille University, Centrale Marseille, IRD, AMSE, Marseille, France, 5 Boulevard Bourdet, 13001, CNRS, and EHESS (email: celine.poilly@univ-amu.fr). Simon Gilchrist was coeditor for this article. We would like to thank three anonymous referees, Wei Cui, Janet Gao, Vivien Lewis, Ander Perez, Vincenzo Quadrini, Ansgar Rannenberg, Serhiy Stepanchuk, Fabien Tripier, Jaume Ventura, and Tomasz Wieladek for their comments. We are also grateful to conference participants at EFA 2014 (Lugano), SED 2014 (Toronto), Frontiers in Macroeconomics and Finance workshop (Ensaï-Rennes), EES-Richmond Fed Conference (Kiel Institute), AFI Macro Workshop (Marseille), Norges Bank conference on New Developments in Business Cycle Analysis (Oslo), T2M conference (Humboldt University, Berlin), ESSIM 2015 (Tarragona), and to several seminar participants at CREI (Barcelona), HEC Paris, NYU Abu-Dhabi, and the Universities of Geneva, Bern, Lyon-GATE, and Virginia. The authors declare that they have no relevant or material financial interests that relate to the research described in this paper. Financial support from the ERC Advanced Grant #269573 is gratefully acknowledged.

<sup>†</sup> Go to <https://doi.org/10.1257/mac.20150191> to visit the article page for additional materials and author disclosure statement(s) or to comment in the online discussion forum.

We first document a robust negative comovement between the corporate cash ratio and employment on US data, which is not specific to the recent financial crisis. Using flow-of-funds data over the period 1980–2015, the correlation between HP-filtered employment and the share of liquid assets in total assets is  $-0.43$ . Moreover, using firm-level data from Compustat, the cross-firm correlation between employment and the cash ratio is on average  $-0.22$  over the same period.<sup>1</sup> Section I provides a detailed description of this empirical analysis.

To understand the optimal cash and employment decisions, we consider an infinite-horizon general equilibrium model with heterogeneous firms that need internal and external liquid funds in their production process. Liquidity is closely related to labor because firms have liquidity needs in order to finance the wage bill, which is part of working capital. We adopt a structure similar to Christiano and Eichenbaum (1995), who divide periods into two subperiods. In the first subperiod, firms use credit to install capital, while they resort to liquid funds to pay workers in the second subperiod. In contrast to the literature introducing working capital in macroeconomic models (see Christiano, Trabandt, and Walentin 2010, for a survey), we assume that firms do not have full access to external liquidity and thus cannot borrow all their short-term needs. This assumption generates a “cash-in-advance” demand for cash related to the wage bill. This implies that having more cash may relax a firm’s financial constraint. Therefore, we show that the *negative* relationship between the cash ratio and employment occurs in a model with a *positive* link between the available level of cash and the wage bill. We show that both types of relationships are consistent with the data.

Liquidity that is external to the firm may take several forms, such as credit lines, trade credits, trade receivables to customers, or late wage payments. Liquidity shocks are changes in the availability of external liquidity and affect the demand for cash. In addition to liquidity shocks, we assume that firms may be hit by technology shocks and by changes in their ability to obtain long-term credit (i.e., standard credit shocks). Shocks can be at the aggregate or at the idiosyncratic level.

The model is designed to be tractable so that several results can be derived analytically. We show that liquidity shocks can explain the negative comovement between employment and the corporate cash ratio. A reduction in external liquidity generates two effects. On the one hand, lower liquidity reduces the financial opportunities of firms and depresses labor demand. On the other hand, the reduction in external liquidity makes the production process more intensive in cash to ensure that wages are fully financed. Firms’ assets are then tilted toward cash. Combining these two effects implies that the cash ratio increases while employment declines. Although the proposed mechanism might appear quite immediate, we show that it is consistent with various aspects of the data. Obviously, there are alternative potential explanations for the negative correlation between the cash ratio and employment. First, the demand for cash can be driven by the cyclicalities in the cost of cash (e.g., see Azar, Kagy, and Schmalz 2016). For example, during the crisis, the flight-to-liquidity can partly be explained by the drop in interest rates, which decreased the opportunity

<sup>1</sup>Melcangi (2016) documents a similar stylized fact for the United Kingdom.

cost of cash. A second alternative explanation emphasizes the role of unexpected shocks. For example, following a negative unexpected productivity shock, firms lay off workers which generates more cash flow. A third explanation is that cash might be held in bad times to finance future investment in good times, so that cash has a “real option value.” However, when we conduct robustness checks to control for these alternative mechanisms, we find that the negative correlation between employment and the cash ratio remains stable and significant. Therefore, the mechanism we propose in this paper should be seen as complementary to other possible channels.

Using cash ratio data enables us to identify liquidity shocks. We find that the aggregate liquidity shocks that are generated by a calibrated version of our model are empirically plausible. Notably, they are highly correlated with the use of short-term loans or of commercial paper. They are also consistent with the tightening of liquidity conditions in the aftermath of the Lehman crisis reported in the literature.<sup>2</sup> Therefore, our model sheds a different light on financial shock, by focusing on liquidity shocks. Besides, our quantitative analysis shows that liquidity shocks can explain a large share of output volatility, and an even larger share of employment volatility.

The introduction of firm heterogeneity in the model allows us to investigate to what extent idiosyncratic liquidity shocks can explain the negative cross-firm correlation between the cash ratio and labor observed in the data. The model is parameterized using moments distribution from firm-level data. Despite its simplicity, it performs relatively well quantitatively to reproduce the negative cross-firm correlation since it gives a correlation of  $-0.13$ , while it is  $-0.22$  in the data. The model is also consistent with the positive correlation between lagged cash and employment that we find in our panel of firms.

The optimal choice of corporate liquidity is rarely introduced in macroeconomic models, even in models with financial frictions. When it is, the focus is on investment, not labor. Liquid assets are usually held by households, typically in the form of money, to finance their consumption.<sup>3</sup> However, firms also have liquidity needs. Papers incorporating firms’ liquidity are typically in the spirit of Holmström and Tirole (2011) and Woodford (1990); they include Aghion et al. (2010), Kiyotaki and Moore (2012), Bacchetta and Benhima (2015), or Cui and Radde (2015). However, these papers do not specifically analyze employment fluctuations.

While the link between liquidity and employment has not received much attention so far, our analysis is related to several strands of the literature. First, there is a growing literature that incorporates firms’ financial frictions in a macroeconomic context. For instance, Covas and Den Haan (2011) and Jermann and Quadrini (2012) analyze corporate external finance decisions over the business cycle, such as debt and equity. However, these papers do not introduce cash. For example, in

<sup>2</sup>Gilchrist and Zakrajšek (2012) argues that banks cut the corporate lines of credit during the crisis. Ivashina and Scharfstein (2010) shows that firms initially drew heavily on their credit lines, but that subsequently credit conditions tightened. Campello et al. (2011) shows that some firms had their credit lines cancelled and that other firms had to renegotiate their credit lines with a higher cost. More generally, credit line agreements may contain restrictive covenants that may limit the ability of borrowers to draw on their lines. See also Chari, Christiano, and Kehoe (2008) or Kahle and Stulz (2013).

<sup>3</sup>There are obviously some exceptions. For example, Stockman (1981) considers a cash-in-advance constraint both for consumption and capital.

their theoretical model, Jermann and Quadrini (2012) have working capital that is fully financed by an intra-period loan. Other papers focus more closely on the relationship between financial factors and the labor market. This literature stresses the role of financial frictions influencing labor demand.<sup>4</sup> Most of these papers provide a more detailed analysis of the labor market than we do, but they do not consider cash holdings. Our analysis focuses on the impact of liquidity conditions on labor demand.

Our paper is also related to a vast theoretical literature in corporate finance on firms' cash holdings and corporate saving. Our approach shares features with several recent papers that provide analyses at the firm level or in environments with heterogeneous firms. Some papers are particularly close to our approach as they focus on the role of financing conditions on cash decisions.<sup>5</sup> Our paper differs from this literature by focusing on employment, which plays a key role in the working capital management. Another difference is that we make a clear distinction between liquid and less liquid assets. The recent dynamic models in the corporate finance literature consider cash a negative debt or as a residual between cash flow and investment.<sup>6</sup> One exception is Melcangi (2016), who studies the effect of variations in the availability of intra-period loans on the employment and cash accumulation behavior of firms. Our paper also differs from most of the literature as we adopt a general-equilibrium, business-cycle approach. The general-equilibrium analysis is important in the context of employment as this is an input that is not generated by the firm (in contrast to capital). As a result, market-clearing wage fluctuations can potentially offset partial equilibrium effects. This is particularly relevant in the context of liquidity management as the wage bill affects firms' liquidity needs. The business-cycle approach enables us to assess the relative importance of financial shocks.

Finally, our approach is consistent with the findings of the empirical literature on the determinants of corporate cash.<sup>7</sup> This literature stresses in particular the precautionary motive to save cash and shows that this motive increases with cash flow uncertainty or with more uncertain access to capital markets (see, for instance, Almeida, Campello, and Weisbach 2004). Some papers have also analyzed the use of short-term credits, like credit lines, and their interaction with corporate cash holdings. They tend to show that cash is a substitute to credit lines, as suggested by our

<sup>4</sup>See, for instance, Wasmer and Weil (2004); Benmelech, Bergman, and Seru (2011); Monacelli, Quadrini, and Trigari (2011); Pagano and Pica (2012); Boeri, Garibaldi, and Moen (2013); Petrosky-Nadeau and Wasmer (2013); Chodorow-Reich (2014); Mehrotra and Sergeyev (2016); Chen, Karabarbounis, and Neiman (2017); or Bentolila, Jansen, and Jiménez (2018).

<sup>5</sup>See, for example, Bolton, Chen, and Wang (2013); Hugonnier, Malamud, and Morellec (2015); Eisfeldt and Muir (2016); and Gao (2018). Falato, Kadyrzhanova, and Sim (2013) and Falato and Sim (2014) show that firms with more intangible capital, including R&D, tend to hold more cash as intangible capital has lower collateral value. Falato and Sim (2014) shows that firms that are more subject to financial frictions are more likely to use cash to finance R&D. Some papers consider other determinants of firms' cash holdings (Boileau and Moyen 2016, Armenter and Hnatkovska 2017).

<sup>6</sup>This contrasts with an older corporate finance literature, see Holmström and Tirole (2011).

<sup>7</sup>See, for example, Bates, Kahle, and Stulz (2009) and Almeida et al. (2014) for surveys.

analysis. For instance, Campello et al. (2011) finds a negative correlation between cash and credit lines.<sup>8</sup>

The rest of the paper is organized as follows. Section I investigates the negative comovement between the corporate cash ratio and employment and the relationship between wages and cash. Section II presents the model and shows the basic mechanism that can lead to this negative relationship, using a baseline version of the model that allows for an analytical solution. In Section III, we calibrate the model to analyze quantitatively the dynamic impact of aggregate shocks. We first consider the baseline model and then a more realistic extended model. We also consider several extensions to that benchmark and the impact of liquidity uncertainty shocks. In Section IV, we examine the effect of idiosyncratic shocks on cross-firm correlations, and Section V concludes. Several results are derived in the online Appendix.

## I. Stylized Facts

In this section, we document a negative comovement in the United States between the corporate cash ratio and employment. We also investigate the connections between cash holdings and the wage bill.

### A. Corporate Cash Ratio and Employment

The negative correlation between cash ratio and employment can be found both in aggregate terms and at the firm level.

*Aggregate Data.*—We first illustrate the aggregate relationship between the two variables over the business cycle. We use quarterly data in the nonfarm nonfinancial corporate sector. The cash ratio, defined as the share of corporate liquidity in total assets, is built from the US flow of funds. Cash is measured as the sum of private foreign deposits, checkable deposits and currency, total time and savings deposits, and money market mutual fund shares. Corporate employment is drawn from the Bureau of Labor Statistics. Figure 1 displays the HP-filtered component of employment (transformed in log) and the cash ratio over the sample 1980:I–2015:III.

The figure shows a negative comovement between the two variables that is particularly striking during the Great Recession since the corporate liquidity ratio experienced a large boom from 2009 while employment has been strongly depressed. Since then, employment has recovered and the liquidity ratio has been less volatile. Over the whole sample, the contemporaneous correlation between employment and the cash ratio is  $-0.43$  and is significant at 1 percent. Table 1 of the online Appendix presents several robustness tests confirming this result, even though there are several cases where the correlation is less negative. Not surprisingly, the negative correlation is smaller by excluding the Great Recession ( $-0.19$ , significant at 10 percent). Interestingly, abstracting from the money market mutual fund shares in

<sup>8</sup> Similarly, Sufi (2009) and Lins, Servaes, and Tufano (2010) show that internal cash is used more in bad times, while firms are more likely to use credit lines in good times. Acharya, Almeida, and Campello (2013) builds a model to show that firms would rather use credit lines instead of cash reserve when they face a low aggregate risk.

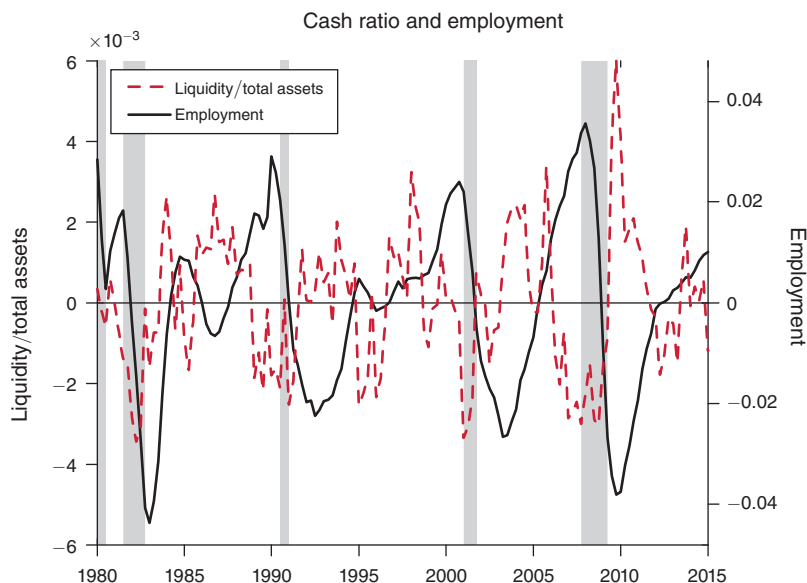


FIGURE 1. CORPORATE LIQUIDITY AND EMPLOYMENT (AGGREGATE DATA)

Note: Employment is expressed in logarithm and both variables are HP-filtered.

the definition of liquidity also leads to a smaller correlation ( $-0.16$ , significant at 5 percent). This result suggests that liquid financial instruments can be part of the explanation regarding the negative correlation.<sup>9</sup>

*Firm-Level Data.*—The stylized fact documented above is driven by macroeconomic shocks common to all firms. In order to capture the heterogeneity among firms, we assess the correlation between the corporate cash ratio and employment using yearly disaggregated firm-level data from Compustat. The sample contains US nonfinancial firms from 1980 to 2014. We focus on firms that are active at least ten years over the period. We exclude financial and utilities firms, firms which are not incorporated in the US market and those engaged in major mergers.<sup>10</sup> This is justified by the fact that part of the stock of cash holding is affected by acquisition.<sup>11</sup> We use the number of employees per firm (Compustat data item #29) as our measure of employment. The corporate cash ratio is defined as the ratio between cash and short-term investment (Compustat data item #1) and the book value of assets

<sup>9</sup>In order to avoid any spurious correlation, we also compute the correlation when cash is divided by the one-quarter lagged value of total assets instead of its current value. The correlation is still negative ( $-0.35$ ) and significant. Figure 2 in the online Appendix displays the liquidity ratio and employment over a longer period (1962:I–2015:III), and we find that the correlation is lower than in the benchmark sample ( $-0.27$ ). Also, Figure 3 in the online Appendix shows that the correlation between the cash level and employment (both in log and HP filtered) is insignificant.

<sup>10</sup>Using Compustat data items, we remove firms when  $6,000 < SIC < 6,999$ ,  $4,900 < SIC < 4,949$ ,  $curcd \neq USD$ , and  $sale\_fn = AB$ .

<sup>11</sup>The sample is reduced to 18,052 firms. Data description and descriptive statistics are provided in the online Appendix.

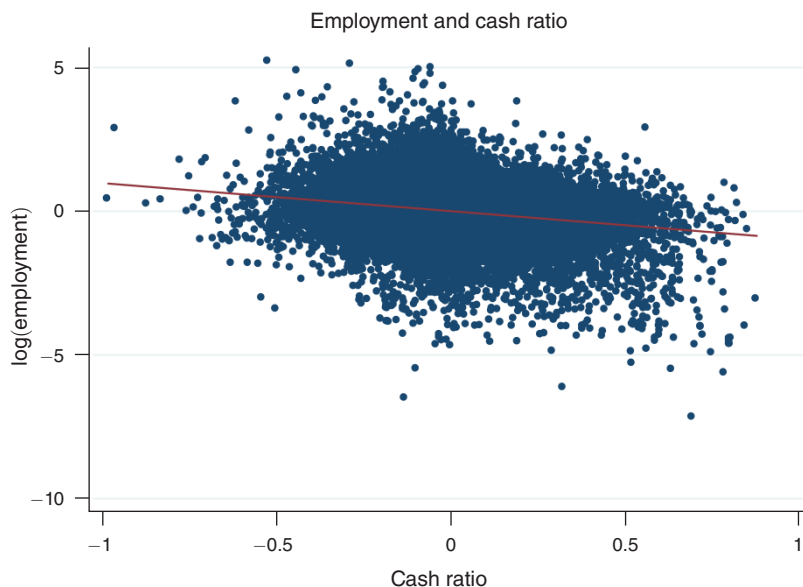


FIGURE 2. FIRM-LEVEL UNCONDITIONAL CORRELATION: CASH RATIO AND EMPLOYMENT

Note: A firm-specific linear trend is removed for both variables.

(Compustat data item #6). Figure 2 draws the scatter plot with the corporate cash ratio (horizontal axis) and the log of employment (vertical axis), both after removing firm-specific linear trends.

The unconditional cross-section correlation between employment and cash ratio is  $-0.22$  on average, and it is significant at 1 percent.<sup>12</sup> To go further in the analysis, we estimate by OLS the following regression equation:

$$(1) \quad \log(EMP_{it}) = \beta_1 + \beta_2 \left( \frac{CHE}{AT} \right)_{it} + \beta_3 \mathbf{X}_{it} + \zeta \mathbf{y}_t + \xi \mathbf{z}_i + \varepsilon_{it},$$

where  $\log(EMP_{it})$  is the log of the number of employees for firm  $i$  at time  $t$ ;  $(CHE/AT)_{it}$  is the cash ratio;  $\mathbf{X}_{it}$  is a vector of firm-specific control variables. We control for unobservable heterogeneity at the firm level by introducing firm fixed effects ( $\mathbf{z}_i$ ). The regression also includes sector-year fixed effects. Finally, control variables, included in  $\mathbf{X}_{it}$ , are the log of sales ( $\log(SALE_{it})$ ) measuring the size of the firm; cash flow ( $CFLOW_{it}$ ), measuring firms' internal funds; the leverage ratio ( $LEV_{it}$ ) capturing the relative demand for credit; and the log of capital expenditures ( $\log(CAPX_{it})$ ) capturing the investment policy of the firm. All variables are firm-specific linearly detrended.<sup>13</sup>

<sup>12</sup> Table 3 in the online Appendix presents a series of robustness checks of this correlation.

<sup>13</sup> Total assets, AT, is the book value of assets (Compustat data item #6). Employment, EMP, is the number of employees per firm multiplied by 100 (Compustat data item #29). Cash, CHE, is cash and short-term investments (Compustat data item #1). Sales correspond to Compustat data item #117. Capital expenditure, CAPX, corresponds to Compustat data item #128. We define debt as the sum of long-term debt (Compustat data item #9) and debt in

TABLE 1—BENCHMARK ESTIMATION: EMPLOYMENT AND CASH RATIO

Dependent variable: $\log(EMP_{it})$	(1)	(2)	(3)	(4)
$\left(\frac{CHE}{AT}\right)_{it}$	-0.980 (0.038)	-0.362 (0.026)	-0.351 (0.027)	-0.342 (0.025)
$\log(SALE_{it})$		0.495 (0.009)	0.497 (0.010)	0.413 (0.010)
$CFLOW_{it}$			-0.002 (0.002)	-0.017 (0.003)
$LEV_{it}$				-0.010 (0.002)
$\log(CAPX_{it})$				0.139 (0.004)
$R^2$	0.07	0.41	0.41	0.47
Firm fixed effects	Yes	Yes	Yes	Yes
Sector-year fixed effects	Yes	Yes	Yes	Yes
Observations	140,497	136,612	119,163	116,743

Notes: Robust standard errors are in brackets. All variables are firm-specific de-trended, and we allow for a firm-specific intercept.

In Table 1, columns 1–4 show a robust negative correlation between employment and the cash ratio. The estimate for  $\beta_2$  is  $-0.34$ , and it is significant at 1 percent when we control for all the firm-specific variables. The negative firm-level correlation is robust to the inclusion of sector-by-year fixed effects, which indicates that it is not driven exclusively by business cycle effects like the cost of cash. Similarly, by controlling for cash flows, we take into account the fact that labor layoffs mechanically generate cash flows. This also controls for “real option value” of cash, to the extent that current cash flows contain information on the future state of the firms.<sup>14</sup>

Table 2 provides robustness checks and additional regressions. Column 1 shows that the correlation is still negative when we control for the size of the firm by using total assets rather than sales. The result is also unaffected when the 10 percent largest firms are dropped from the sample, as recommended by Covas and Den Haan (2011) (column 2). In this paper, we argue that the negative idiosyncratic correlation between cash holding and employment is driven by the availability of external liquidity: facing a reduction in external liquid funds, a firm reduces employment and raises the amount of cash in its portfolio to finance the wage bill, which is part of working capital. Results in columns 3 to 5 are in line with this intuition. Column 3 reveals a positive correlation between employment and external liquid funds proxied by the share of short-term debt to total debt.<sup>15</sup> Column 5 uses an alternative measure of working capital, namely inventories, as a dependent variable and shows

current liabilities (Compustat data item #34). We define cash flow,  $CFLOW$ , as the income before extraordinary items (Compustat data item #118) + depreciation and amortization (Compustat data item #133) normalized by firm’s capital. We define the leverage ratio,  $LEV$ , as the ratio between debt and the book value of assets.

<sup>14</sup>The correlation is also robust to the use of variables in differences (see Table 5 in the online Appendix).

<sup>15</sup>The short-term debt is defined as the total debt (Compustat data item #34), minus the long-term debt (Compustat data item #142), which represents debt obligations due in more than one year. Notice that the cash ratio is significantly and negatively correlated with the share of short-term debt ( $-0.13$ ). See the online Appendix for details. In Table 11 of the online Appendix, we redo the benchmark estimation for constrained and unconstrained firms, proxied by different measures of financing constraints.

TABLE 2—ROBUSTNESS: EMPLOYMENT AND CASH RATIO

Dependent variable	log( $EMP_{it}$ )				log( $INVT_{it}$ )
	(1)	(2)	(3)	(4)	(5)
$\left(\frac{CHE}{AT}\right)_{it}$	-0.813 (0.025)	-0.329 (0.026)		-0.328 (0.022)	-0.610 (0.031)
$\left(\frac{ST\ DEBT}{TOTAL\ DEBT}\right)_{it}$			0.056 (0.020)		
$\left(\frac{CHE}{AT}\right)_{it-1}$				0.259 (0.018)	
log( $EMP_{it-1}$ )				0.451 (0.011)	
log( $SALE_{it}$ )		0.383 (0.011)	0.424 (0.010)	0.241 (0.009)	0.654 (0.013)
log( $AT_{it}$ )	0.528 (0.008)				
$CFLOW_{it}$	-0.003 (0.003)	-0.017 (0.004)	-0.017 (0.004)	-0.007 (0.002)	-0.021 (0.004)
$LEV_{it}$	-0.001 (0.003)	-0.008 (0.002)	-0.010 (0.002)	-0.006 (0.002)	0.001 (0.002)
log( $CAPX_{it}$ )	0.085 (0.004)	0.135 (0.004)	0.139 (0.004)	0.100 (0.003)	0.096 (0.004)
$R^2$	0.49	0.45	0.46	0.60	0.44
Firm fixed effects	Yes	Yes	Yes	Yes	Yes
Sector-year fixed effects	Yes	Yes	Yes	Yes	Yes
Observations	118,312	99,371	114,666	109,779	103,172

Notes: Robust standard errors are in brackets. All variables are firm-specific de-trended, and we allow for a firm-specific intercept.

that its correlation with the cash ratio is still negative and significant. Notice that column 4 is discussed in the next section.

### B. Financing Wages with Cash

An important assumption of our model is that cash holding decisions are determined by wage bill financing. We use firm-level data to investigate the plausibility of this assumption by analyzing the relationship between cash *level* and wages. From our database, we observe that cash represents 36 percent of firms' staff expenses (median value).<sup>16</sup> In our model, we assume that corporate cash is used to finance end-of-period wages. We assess this link by regressing the future amount of staff expenses ( $XLR_{it+1}$ ), which proxies the expected future wage, on the current cash level (both expressed in log).

Table 3, columns 1–4 display the results of the estimation. In column 1, we estimate the conditional correlation between future wages and the cash level, including fixed effects and year-sector-fixed effects and without control. The year-sector-fixed

<sup>16</sup>The series staff expense (Compustat data item #42) includes salaries, wages, pension costs, profit sharing and incentive compensation, payroll taxes, and other employee benefits. The scarce availability of this variable reduces the sample to 2,224 firms. The online Appendix shows that the distribution of firms' size and cash ratio is slightly affected (see Table 11 in the online Appendix). In addition, the correlation between the cash ratio and employment is -0.18 and still significant at 1 percent.

TABLE 3—WAGES AND CASH

	Dependent variable: $\log(XLR_{it+1})$			
	(1)	(2)	(3)	(4)
$\log(CHE_{it})$	0.165 (0.010)	0.015 (0.004)	0.041 (0.004)	0.021 (0.00)
$\log(XLR_{it})$		0.530 (0.023)	0.627 (0.03)	0.728 (0.01)
$\log(AT_{it})$		0.239 (0.012)		
$\log(SALE_{it})$			0.110 (0.01)	0.180 (0.00)
$R^2$	0.30	0.97	0.97	
Sector-year fixed effects	Yes	Yes	Yes	No
Firm fixed effects	Yes	Yes	Yes	No
Estimation	OLS	OLS	OLS	SYS-GMM
Hansen test ( $p$ -value)	—	—	—	0.70
Arellano-Bond test ( $p$ -value), AR(2)	—	—	—	0.22
Observations	18,644	18,642	18,100	18,133

Notes: Robust standard errors are in brackets. All variables are firm-specific de-trended, and we allow for a firm-specific intercept.

effects are included because it is very likely that the correlation depends on the type of sector we consider. In columns 2 and 3, we control for the current amount of staff expenses and the size of the firm. In column 4, we use the typical Arellano-Bond (GMM) estimation to take the endogeneity issue more specifically into account. The Hansen test for overidentification suggests that we do not reject the exogeneity of the instruments, even though our results might be sensitive to the choice of instruments set. In all specifications, there is a positive and significant relationship between the cash level and future staff expenses. This result suggests that firms hold more cash prior to a rise in staff expenses, which is in line with our model's assumption.

The result that current cash level is positively associated with the future wage bill might seem in contradiction with our baseline finding that the current cash ratio is negatively associated with employment. Column 4 of Table 2 reconciles these facts by extending the baseline regression and by looking at the effect of past and current cash ratio on employment. While there is a negative relationship between the cash ratio and employment at the current period, we also find that an increase in the current cash ratio is positively related to future employment conditional on current employment. We will show that our model actually generates both facts: the negative correlation between employment and the contemporaneous cash ratio and the positive correlation between employment and past cash (through a cash-in-advance constraint).

We investigate further this relationship by looking at data at the industry level. One might expect that labor-intensive industries experience a stronger correlation between cash level and wage. The NBER-CES Manufacturing Industry Database provides a measure of labor share, defined as the ratio between payroll and value added, by year and by industry. We merge this database with the Compustat database in order to get the (median) amount of cash, wages, and total assets. The sample

covers 1980–2009 and consists of 103 industries. As previously, we analyze the relationship between current cash holding and future staff expenses (both expressed in log), but we now add an interaction term between cash level and the labor share. This interaction is significantly positive and therefore we find that the correlation between cash and future wages is stronger for industries that rely more on labor.<sup>17</sup> These two pieces of evidence go in favor of our assumption that cash is a key financing source of wages for firms.

## II. A Dynamic Model of Corporate Cash Holdings

The single-good economy is inhabited by infinitely lived heterogeneous entrepreneurs, identical households, deposit institutions, and a government. Entrepreneurs produce, hire labor, invest, borrow, and hold cash. Households work, consume, lend to entrepreneurs, and hold short-term deposits. There are two types of debt: short-term debt and long-term debt. Liquidity is modeled by dividing each period into two subperiods, which we refer to as beginning-of-period and end-of-period. We define short-term debt as the debt that can be issued between end-of-period  $t$  and beginning-of-period  $t + 1$ .<sup>18</sup> Long-term debt is debt that can be issued for the full period. It is illiquid in the sense that the long-term debt market does not open at end-of-period. The firm faces two different credit constraints attached to each type of debt. These two types of debt matter because firms face liquidity issues during the production process. Firms have a liquidity need at end-of-period as they have to pay for the wage bill.<sup>19</sup> This liquidity need can be covered either by short-term debt, which we refer to as “external liquidity,” or by cash holdings. Therefore, the need for cash is affected by changes in the availability of external liquidity. We first describe the problem of entrepreneurs and then turn to their optimal behavior, focusing on optimal labor demand and cash. We then close the model and characterize analytically the properties of the model in a baseline case.

### A. Entrepreneurs

There is a continuum of entrepreneurs of length 1. Entrepreneur  $i \in [0, 1]$  maximizes

$$(2) \quad E_t \sum_{s=0}^{\infty} \beta^s u(c_{it+s}),$$

where  $c_{it+s}$  is his consumption in period  $t + s$  and  $u(\cdot)$  is a strictly increasing and concave function. Entrepreneur  $i$  produces  $Y_{it}$  out of capital  $K_{it}$  and labor  $l_{it}$  through the production function

$$(3) \quad Y_{it} = F(K_{it}, A_{it}l_{it}),$$

<sup>17</sup> Estimation results are provided in Table 14 of the online Appendix.

<sup>18</sup> This debt can be considered as intra-temporal since there are no consumption decisions during this interval.

<sup>19</sup> For convenience, we only consider labor as end-of-period input. In a related context, Gao (2018) considers raw material instead of labor.

where  $F(\cdot)$  is a standard constant-return-to-scale production function and  $A_{it}$  is total factor productivity (TFP). Capital depreciates at rate  $\delta$ . In the baseline version of the model, we abstract from adjustment costs. TFP is composed of an aggregate component and an idiosyncratic one,

$$(4) \quad A_{it} = A_t + \epsilon_{it}^A,$$

where  $\log(A_t)$  follows an AR(1) process and  $\epsilon_{it}^A$  follows a Markov process, with  $E(A_t) = A$  and  $\int_0^1 \epsilon_{it}^A di = 0$ .

Entrepreneurs enter beginning-of-period  $t$  with initial wealth  $\Omega_{it}$  and can borrow in illiquid debt  $D_{it}$  to pay for their consumption, their capital, and cash  $M_{it}$ . Debt  $D_{it}$  is illiquid in the sense that it can only be issued at beginning-of-period. We follow Jermann and Quadrini (2012) by assuming that firms benefit from a subsidy on debt, so the gross interest rate on debt is  $r_t = \tau R_t$ , with  $0 < \tau < 1$ , where  $R_t$  is the before-tax interest rate.<sup>20</sup> Cash bears no interest. The firms' beginning-of-period budget constraint is

$$(5) \quad \Omega_{it} + D_{it} = c_{it} + K_{it} + M_{it}.$$

The cash ratio  $m_{it}$  is defined as the proportion of cash to total assets, i.e.,  $m_{it} \equiv M_{it}/(K_{it} + M_{it})$ . As  $D_{it}$  is never negative in equilibrium, it is never part of gross assets.<sup>21</sup> Initial wealth is made of output, the remaining capital stock, and unused cash minus the gross interest rate payment on debt and the cost associated with external liquidity used in the previous subperiod,

$$(6) \quad \Omega_{it} = Y_{it-1} + (1 - \delta) K_{it-1} + \tilde{M}_{it-1} - r_{t-1} D_{it-1} - r_{t-1}^L L_{it-1},$$

where  $\tilde{M}_{it-1}$  is unused cash,  $L_{it-1}$  is external liquidity obtained in the previous end-of-period, and  $r_t^L \geq 1$  is the cost associated with it.

Liquidity shocks (defined below) affect the magnitude of external liquidity  $L_{it}$  available to firms. At end-of-period  $t$ , firms need to pay for wages, before production takes place, which is at the next beginning-of-period. Hence, they have to pay out of their cash or any liquid funds they obtain in that end-of-period. They face the following liquidity constraint:

$$(7) \quad M_{it} + L_{it} \geq w_t l_{it},$$

where  $w_t$  is the wage rate. If  $L_{it}$  were 0, (7) would be a standard cash-in-advance constraint. Unused cash is simply defined as  $\tilde{M}_{it} = M_{it} - L_{it} - w_t l_{it}$ . It will be equal

<sup>20</sup>This tax advantage of debt is also found in Hennessy and Whited (2005). It reflects the firms' preference for debt over equity (pecking order). In our model, this pecking order is represented by the fact that firms will have a tendency to consume (which corresponds to distributing dividends) and as a consequence, they will be leveraged up to the maximum level.

<sup>21</sup> $D_{it}$  is nonnegative because all firms are always constrained due to the debt subsidy and because we abstract from equity issuance. If some firms were unconstrained, they could choose a negative  $D_{it}$ , and thus hold both bonds and cash.

to zero in equilibrium in all of our analysis. We assume that liquidity is constrained by lenders. Due to standard moral hazard arguments, a fraction  $0 \leq \kappa_{it} \leq 1$  of the capital stock at the beginning-of-period has to be used as collateral for debt repayments, i.e.,

$$(8) \quad r_t^L L_{it} \leq \kappa_{it} (1 - \delta) K_{it}.$$

We will assume that  $r_t > r_t^L$ , so that  $r_t^L L_{it} = \kappa_{it} (1 - \delta) K_{it}$ . Shocks to  $\kappa_{it}$  are therefore liquidity shocks, i.e., shocks that affect the amount of external liquidity.<sup>22</sup>

The liquidity shock  $\kappa_{it}$  is assumed to be composed of an aggregate component and an idiosyncratic one,

$$(9) \quad \kappa_{it} = \kappa_t + \epsilon_{it}^\kappa,$$

where  $\log(\kappa_t)$  follows an AR(1) process and  $\epsilon_{it}^\kappa$  follows a Markov process, with  $E(\kappa_t) = \kappa$  and  $\int_0^1 \epsilon_{it}^\kappa di = 0$ . In our baseline analysis, we simply assume that  $\kappa_{it}$  is known at beginning-of-period  $t$ , but we relax this assumption in the more general numerical analysis.

Finally, we assume that the entrepreneur faces a standard credit constraint at beginning-of-period  $t$ .<sup>23</sup> A fraction  $0 \leq \phi_{it} \leq 1$  of the capital stock at the beginning-of-period has to be used as collateral for debt repayments:

$$(10) \quad r_t D_{it} \leq \phi_{it} (1 - \delta) K_{it}.$$

In principle, the two constraints (8) and (10) could be related. However, we specify them independently as we will build  $\kappa_{it}$  directly from the data.

The parameter  $\phi_{it}$  is composed of an aggregate component and a firm-specific one,

$$(11) \quad \phi_{it} = \phi_t + \epsilon_{it}^\phi,$$

where  $\log(\phi_t)$  follows an AR(1) process with  $E(\phi_t) = \phi$  and  $\int_0^1 \epsilon_{it}^\phi di = 0$ .

In this paper, we make the distinction between a standard credit shock,  $\phi_{it}$ , and a liquidity shock,  $\kappa_{it}$ . The former can be viewed as a standard disturbance on the banking sector since it affects the long-term credit. The latter corresponds to an exogenous change in the availability of external liquid funds, as for instance a variation in the supply of credit lines or a restriction in the ability to extend trade credit. We argue that distinguishing credit from liquidity shocks matters because the latter generates a negative correlation between employment and the cash ratio and it explains a notable share of output fluctuations.

<sup>22</sup> External liquidity could also vary with the proportion of wages that have to be paid at end-of-period.

<sup>23</sup> The presence of credit constraints at the beginning-of-period is not crucial to the main mechanisms we analyze, but it allows us to study the impact of credit market shocks. Moreover, it is a convenient assumption with heterogeneous firms, as it puts a limit to the size of the most productive firms.

### B. Optimal Cash Holding and Employment

Before closing the model, it is interesting to examine the relationship between cash and employment in partial equilibrium, that is, for given interest rates and wages. Entrepreneurs maximize (2) subject to (5), (7), and (10). The optimization of the entrepreneur is described in detail in the online Appendix. We assume that shocks are anticipated so the random variables  $A_{it}$ ,  $\kappa_{it}$ , and  $\phi_{it}$  are known at beginning-of-period  $t$ . While this assumption is natural for  $\phi_{it}$  since firms borrow long term at beginning-of-period, it is less so for  $\kappa_{it}$ , as firms borrow short term at end-of-period. However, this assumption is useful to derive analytical results. It will be relaxed in the quantitative analysis in Section IIIC, where  $\kappa_{it}$  will be learned at the end-of-period. As cash does not yield any interest, one can verify that (7) is always binding so that  $\tilde{M}_{it} = 0$ .

It is convenient to express production as a function of the capital-labor ratio  $k_{it} = K_{it}/l_{it}$ . We have  $F(K_{it}, A_{it}l_{it}) = A_{it}l_{it}f(k_{it}/A_{it})$ , where  $f(k) = F(k, 1)$ . The optimality conditions with respect to  $l_{it}$  and  $K_{it}$  imply that the capital-labor ratio is described by (see online Appendix)

$$(12) \quad k_{it} = A_{it}\tilde{k}(\tilde{w}_{it}, \kappa_{it}, \phi_{it}, r_t, r_t^L),$$

where  $\tilde{w}_{it} = w_t/A_{it}$ . As shown in the online Appendix,  $\tilde{k}(\cdot)$  is increasing in  $\tilde{w}_{it}$ ,  $\phi_{it}$ , and  $\kappa_{it}$ . Indeed, a lower wage makes production less intensive in capital as opposed to labor. Besides, as capital is the collateral, lower  $\phi_{it}$  and  $\kappa_{it}$  reduce the collateral value of capital and thus have a negative effect on the capital-labor ratio. The effect of a reduction in TFP,  $A_{it}$ , is more ambiguous as it reduces both the marginal productivity of labor and capital, leading to a reduction in both inputs. In the Cobb-Douglas case where  $F(K_{it}, A_{it}l_{it}) = K_{it}^\alpha (A_{it}l_{it})^{1-\alpha}$ , however, we can show that overall, a lower productivity increases the capital-labor ratio when  $\delta > 0$ . In that case, a reduction in  $A_{it}$  affects the marginal productivity of labor relatively more than the return on capital, because it does not affect the remaining stock of capital.

The cash ratio, which is a key variable in our analysis because it reflects the cash-intensity of production, can be derived from the above results. Using (7), (12), and  $r_t^L L_{it} = \kappa_{it}(1 - \delta)K_{it}$ , we find

$$(13) \quad \frac{M_{it}}{K_{it}} = \frac{1}{k_{it}} [w_t - \kappa_{it}(1 - \delta)k_{it}/r_t^L] = \frac{w_t}{k_{it}} - \kappa_{it} \frac{(1 - \delta)}{r_t^L}.$$

The demand for cash per unit of capital is equal to the demand for cash per unit of labor, divided by the capital-labor ratio. The demand for cash per unit of labor is itself simply equal to the liquidity need per unit of labor ( $w_t$ ), minus external liquidity per unit of labor ( $\kappa_{it}(1 - \delta)k_{it}/r_t^L$ ). A decrease in  $\kappa_{it}$  has two effects: a direct negative effect as it diminishes the access to external finance and an indirect negative collateral effect as the capital-labor ratio decreases. These two effects both increase the cash ratio. A decrease in  $\phi_{it}$  also increases the cash ratio, but only through the negative collateral effect. In contrast, a decrease in  $A_{it}$  increases the capital-labor ratio and as a result, it decreases the cash ratio. Equation (13) then

implies that the cash ratio, which depends solely on  $M_{it}/K_{it}$ , comoves negatively with  $\kappa_{it}$  and positively with  $A_{it}$ .

To analyze labor demand, we will focus on cases where entrepreneurs are credit-constrained and have log utility. The online Appendix shows that the credit constraint is binding whenever the wage paid by firms,  $w_t$ , is lower than the marginal return of labor, which boils down to a function of  $A_{it}$ ,  $\kappa_{it}$ ,  $\phi_{it}$ , and the interest rates:  $w^*(A_{it}, \kappa_{it}, \phi_{it}, r_t, r_t^L)$ . Moreover, with log utility, the online Appendix shows that optimal consumption is  $c_{it} = (1 - \beta)\Omega_{it}$ . In that case, it is useful to rewrite the constraint (5) using (7), (10), and  $L_{it} = \kappa_{it}(1 - \delta)K_{it}$ . This gives

$$(14) \quad \beta\Omega_{it} + \frac{\phi_{it}(1 - \delta)K_{it}}{r_t} + \frac{\kappa_{it}(1 - \delta)K_{it}}{r_t^L} = K_{it} + w_t l_{it}.$$

Equation (14) gives the budget constraint aggregated over the two subperiods. Total financing of firms, on the left-hand side, pays for inputs, on the right-hand side. Both the long-term and short-term financing conditions, represented respectively by  $\phi_{it}$  and  $\kappa_{it}$ , affect the capacity of firms to finance labor  $l_{it}$  and capital  $k_{it}$ . Using (14), the optimal behavior of entrepreneurs, for given interest rates and wages, is described in the following proposition.

**PROPOSITION 1 (Individual Policy Functions):** *Suppose that  $u(c_{it}) = \ln(c_{it})$ . If  $r_t > r_t^L > 1$ , then there exists a function  $w^*$  such that, if  $w_t < w^*(A_{it}, \kappa_{it}, \phi_{it}, r_t, r_t^L)$ , then the liquidity constraint (7) and the credit constraints (8) and (10) are binding,  $k_{it}$  is given by (12), and the policy functions for  $K_{it}$ ,  $M_{it}$ ,  $l_{it}$ ,  $D_{it}$ , and  $\Omega_{it+1}$  satisfy*

$$(15) \quad l_{it} = Z_{it}\Omega_{it},$$

$$(16) \quad K_{it} = k_{it}Z_{it}\Omega_{it},$$

$$(17) \quad M_{it} = [w_t - \kappa_{it}(1 - \delta)k_{it}/r_t^L]Z_{it}\Omega_{it},$$

$$(18) \quad D_{it} = \phi_{it}(1 - \delta)k_{it}Z_{it}\Omega_{it}/r_t,$$

$$(19) \quad \Omega_{it+1} = [(1 - \kappa_{it} - \phi_{it})(1 - \delta)k_{it} + A_{it}f(k_{it})]Z_{it}\Omega_{it},$$

where

$$(20) \quad Z_{it} = \frac{\beta}{[k_{it} + w_t] - (\kappa_{it}/r_t^L + \phi_{it}/r_t)(1 - \delta)k_{it}}.$$

**PROOF:**

See online Appendix.

We call  $Z_{it}$  the financial multiplier. It measures the impact of a change in wealth on labor demand. Notice that a decline in the financing conditions  $\phi_{it}$  or  $\kappa_{it}$  implies a smaller  $Z_{it}$ , everything else equal. A worsening of financing conditions has thus a

negative effect on inputs, including labor. However, it also decreases the capital-labor ratio as the collateral value of capital declines, which has a positive effect on labor. Under standard assumptions, the direct negative effect dominates, as shown in the following corollary.

**COROLLARY 1:** *Under the Cobb-Douglas production function, ceteris paribus, firms with lower financing conditions  $\kappa_{it}$  or  $\phi_{it}$  have lower employment  $l_{it}$  and a higher cash ratio  $m_{it}$ . Moreover, a lower productivity  $A_{it}$  affects negatively employment  $l_{it}$  but has a negative effect on the cash ratio  $m_{it}$ .*

**PROOF:**

See online Appendix.

Corollary 1 illustrates the main mechanism in the model. An expected decrease in  $\kappa_{it}$  implies a smaller amount of available liquid funds at end-of-period  $t$ . As a response, firms naturally increase the proportion of cash in their portfolio, as seen in (13). At the same time, they reduce their labor demand and their production, as outside funding decreases. The same occurs with a decline in  $\phi_{it}$ , but the increase in cash ratio is milder. This increase takes place as firms reduce their capital stock relative to labor and hence relative to their liquidity needs, because of the indirect collateral effect. On the opposite, with a decline in productivity  $A_{it}$ , firms increase their capital-labor ratio, which has a negative effect on their cash ratio, as their liquidity needs to decline in proportion to capital. At the same time, labor declines. Note that these results hold under partial equilibrium, but give an important hint on the general equilibrium behavior of the economy.

### C. Closing the Model

The model is closed by introducing identical households, deposit institutions, and a government. Households supply labor, long-term debt, and make short-term deposits at deposit institutions while deposit institutions supply short-term debt to firms. The government supplies money to firms and deposit institutions. Money is supplied hyperelastically so that its price is always equal to one. The wage rate  $w_t$  and the interest rates  $r_t$ ,  $R_t$ , and  $r_t^L$  are then determined endogenously.

Identical households have utility  $U_t$  with the discount factor  $\beta$ ,

$$(21) \quad U_t = E_t \sum_{s=0}^{\infty} \beta^s \left[ v(c_{t+s}^h, l_{t+s-1}) \right],$$

where  $c_t^h$  and  $l_{t-1}$  are respectively the household's consumption and the labor supplied to firms at the beginning of period (to produce  $Y_{t-1}$ ).

At the end of  $t-1$ , households receive wages  $w_{t-1}l_{t-1}$  and deposit them at a deposit institution.<sup>24</sup> Deposit institutions lend  $L_{t-1}$  short term to entrepreneurs and hold the rest at the central bank, in quantity  $M_{t-1} - \tilde{M}_{t-1}$ . The intermediation cost

<sup>24</sup>We assume it is too costly for households to provide short-term loans to entrepreneurs.

for a deposit institution is linear in total short-term lending, with a unit cost of  $\psi > 0$ . We assume that deposit institutions behave competitively so the return on households deposits is 1 and the cost of short-term lending is  $r_{t-1}^L = 1 + \psi > 1$ .

These deposits are then used by households at beginning-of-period  $t$  to consume and invest in long-term bonds  $D_t^h$ , along with the return on last period bonds  $R_{t-1}D_{t-1}^h$ .<sup>25</sup> Households also receive transfers  $T_t$  from the government. This yields the following household budget constraint:

$$(22) \quad w_{t-1}l_{t-1} + R_{t-1}D_{t-1}^h + T_t = c_t^h + D_t^h.$$

We use GHH preferences, which take the form

$$(23) \quad v(c^h, l) = \frac{\left(c^h - \bar{w} \frac{l^{1+1/\eta}}{1 + 1/\eta}\right)^{1-\sigma}}{1 - \sigma},$$

where  $\eta > 0$  is the Frisch elasticity of labor supply,  $\bar{w}$  is a positive constant, and  $1/\sigma > 0$  is the elasticity of intertemporal substitution. Households' optimization then implies that, in equilibrium (see online Appendix for details), bonds are priced via the Euler equation

$$(24) \quad E_t \left[ \left( c_t^h - \bar{w} \frac{l_{t-1}^{1+1/\eta}}{1 + 1/\eta} \right)^{-\sigma} - \beta R_t \left( c_{t+1}^h - \bar{w} \frac{l_t^{1+1/\eta}}{1 + 1/\eta} \right)^{-\sigma} \right] = 0,$$

where  $E_t(\cdot)$  is the expectation as of beginning-of-period  $t$ .

Additionally, households have a labor supply  $l^s(w_t)$  that depends positively on the wage rate. In our specification, we have (see online Appendix)

$$(25) \quad l^s(w_t) = (w_t/\bar{w})^\eta.$$

The wage rate is then determined endogenously so that  $l^s(w_t) = \int_0^1 l_{it} di$ , where  $l_{it}$  is labor demand by firm  $i$  in period  $t$ . According to Proposition 1,  $l_{it} = l(w_t, r_t, r_t^L, A_{it}, \kappa_{it}, \phi_{it}, \Omega_{it})$ , so the equilibrium wage is defined by

$$(26) \quad l^s(w_t) = \int_0^1 l(w_t, r_t, r_t^L, A_{it}, \kappa_{it}, \phi_{it}, \Omega_{it}) di.$$

We assume, without loss of generality, that only firms issue long-term and short-term bonds, so that  $D^h = D$ . By contrast, only the government can issue money  $M_t$  to meet the demands of firms and depositors. The government has a budget constraint at beginning-of-period  $t$ :

$$(27) \quad T_t + R_{t-1}(1 - \tau)D_{t-1} = M_t - M_{t-1}.$$

<sup>25</sup>Households do not hold money at beginning-of-period because it is strictly dominated by long-term bonds as a saving instrument and there is no specific liquidity service of money.

Finally, the consolidated household's and government's budget constraints, using  $D^h = D$  and  $\tau R = r$ , yield

$$(28) \quad w_{t-1}l_{t-1} + r_{t-1}D_{t-1}^h + M_{t-1} = c_t^h + D_t^h + M_t.$$

#### D. Equilibrium in the Baseline Case

We first consider a tractable baseline case. This is the case when the interest rate is constant, which occurs when  $\sigma = 0$  so that households have an infinite elasticity of intertemporal substitution. In this case,  $R_t = 1/\beta$  so  $r_t = \tau/\beta$ . We therefore let the wage adjust, while the interest rate is constant. We will relax this assumption when we turn to the fully calibrated version of the model. We still assume that the random variables  $A_{it}$ ,  $\kappa_{it}$ , and  $\phi_{it}$  are known at beginning-of-period  $t$ . We consider separately aggregate and idiosyncratic shocks.

*Aggregate Shocks.*—In the absence of idiosyncratic shocks, the only potential source of heterogeneity between firms is their wealth. Since labor demand is linear in wealth, we can then write  $l_t = \int_0^1 l(w_t, r_t, r_t^L, A_t, \kappa_t, \phi_t, \Omega_{it}) di = l(w_t, r_t, r_t^L, A_t, \kappa_t, \phi_t, \Omega_t)$ , where  $\Omega_t = \int_0^1 \Omega_{it} di$ . This holds for  $K_t$ ,  $M_t$ , and  $D_t$  as well. We consider a constrained equilibrium defined as follows.

**DEFINITION 1** (Constrained Equilibrium under Aggregate Shocks Only): *For a given aggregate wealth  $\Omega_t$  and a given realization of  $A_t$ ,  $\kappa_t$ , and  $\phi_t$ , a constrained period- $t$  equilibrium is a level of employment  $l_t$ , capital  $K_t$ , cash  $M_t$ , debt  $D_t$ , financial multiplier  $Z_t$ , and future wealth  $\Omega_{t+1}$ , satisfying equations (15) to (20), where  $r_t = \tau/\beta$ ,  $r_t^L = 1 + \psi$ , the wage  $w_t$  clears the labor market so that  $l^s(w_t) = l_t$  where  $l^s(w_t)$  satisfies the labor supply equation (25), and  $k_t$  is the corresponding capital-labor ratio given by equation (12). Finally, the equilibrium wage  $w_t$  must be strictly lower than  $w^*(A_t, \kappa_t, \phi_t, r_t, r_t^L)$ .*

Since aggregate labor demand depends on  $A_t$ ,  $\kappa_t$ ,  $\phi_t$ ,  $r_t$ ,  $r_t^L$ , and  $\Omega_t$ , the equilibrium wage also depends on those variables:  $w_t = w(A_t, \kappa_t, \phi_t, r_t, r_t^L, \Omega_t)$ . For an individual firm, we saw that the credit constraint is binding when we have  $w_t < w^*(A_{it}, \kappa_{it}, \phi_{it}, r_t, r_t^L)$ , so that the wage is lower than the marginal productivity of labor. At the aggregate level, we can show that there exists an increasing function  $\Omega^*(A_t, \kappa_t, \phi_t, r_t, r_t^L)$  so that  $\Omega_t < \Omega^*$  is equivalent to  $w_t < w^*(A_t, \kappa_t, \phi_t, r_t, r_t^L)$ . When firms' resources are limited by the credit constraints, the aggregate labor demand is low when the aggregate wealth is low, which maintains the equilibrium wage below the marginal productivity of labor, and firms remain constrained in equilibrium. It is shown in the online Appendix that for the steady state to be constrained, we need  $\tau < 1$ . Individual agents and the aggregate economy will fluctuate around a constrained steady state. Therefore, for small enough shocks, the economy will be constrained, as assumed in our analysis. When  $\tau < 1$ , the net interest rate  $r_t - 1$  is below the propensity to consume out of wealth  $1/\beta - 1$ , so firms' wealth and the corresponding demand

for labor stay below the level at which the equilibrium wage would equal marginal productivity.<sup>26</sup>

*Idiosyncratic Shocks.*—In the absence of aggregate shocks, the constrained equilibrium is defined as follows.

**DEFINITION 2 (Constrained Equilibrium under Idiosyncratic Shocks Only):** *For a given period- $t$  distribution of wealth, productivity, and liquidity  $\{\Omega_{it}, A_{it}, \kappa_{it}\}_{i \in [0,1]}$ , a constrained period- $t$  equilibrium is given by the firm-specific levels of employment  $l_{it}$ , capital  $K_{it}$ , cash  $M_{it}$ , debt  $D_{it}$ ,  $Z_{it}$ , and future wealth  $\Omega_{it+1}$  satisfying equations (15) to (20), where  $r_t = \tau/\beta$ ,  $r_t^L = 1 + \psi$ , the wage  $w_t$  clears the labor market such that  $l^s(w_t) = \int_0^1 l_{it} di$  is satisfied with  $l^s(w_t)$  following the labor supply equation (25), and  $k_{it}$  is the corresponding capital-labor ratio given by equation (12). Finally, the equilibrium wage must satisfy  $w_t < w^*(A_{it}, \kappa_{it}, \phi_{it}, r_t, r_t^L)$  for all  $i \in [0, 1]$ .*

In our simulation exercise in Section IV, we will check ex post that we do have  $w_t < w^*(A_{it}, \kappa_{it}, \phi_{it}, r_t, r_t^L)$  for all  $i$ .

### III. Macroeconomic Effects of Liquidity Shocks

In this section, we focus on the effects of aggregate shocks, assuming that all entrepreneurs are identical ( $\epsilon_i^A = \epsilon_i^\kappa = \epsilon_i^\phi = 0$ ). The assessment of idiosyncratic shocks is addressed in Section IV. First, we parameterize the model and we analyze the dynamic impact of productivity and financial shocks in the baseline model. We then consider an extended model where several of our simplifying assumptions are relaxed. We derive the series of shocks that are consistent with the extended model and examine their properties and their dynamic impact. We then analyze the robustness to various extensions, namely a more general production function, rigid wages, a separable utility function, or adjustment costs. Finally, we examine the impact of liquidity uncertainty.

#### A. Parameterization

Table 4 details the model's parameters. In the baseline model, we set  $\sigma = 0$ , so that households have an infinite elasticity of inter-temporal substitution. In that case, both interest rates are constant over time. We relax this assumption in Section IIIC by introducing a time-varying long-term interest rate with  $\sigma = 1$ . As standard in the literature, we set the share of capital in production,  $\alpha$ , to 0.36; the Frisch parameter,  $\eta$ , is set to unity, and we assume an annual capital depreciation rate of 10 percent ( $\delta = 0.025$ ). The firms' discount factor is set to  $\beta = 0.975$ , which—combined with a subsidy on net interest debt payments,  $\tau$ , to 40 percent—generates an effective

<sup>26</sup>We also need  $\psi < \tau/\beta - 1$ , to guarantee that  $r > r^L$  in the steady state and hence that the short-term credit constraint is binding as well. Note that  $r = r^L$  would still yield a binding short-term credit constraint as long as the long-term credit constraint is binding.

TABLE 4—MODEL'S PARAMETERIZATION

$\sigma^{-1}$	Elasticity of inter-temporal substitution	1.00
$\eta$	Frisch parameter	1.00
$\alpha$	Elasticity of output with respect to capital	0.30
$\delta$	Capital depreciation rate	0.025
$\beta$	Firms discount factor	0.975
$\tau$	Tax advantage	0.40
$r$	Gross long-term interest rate	1.016
$r^L$	Liquidity cost	1.003
$\phi$	Collateral share for debt	0.09
$\kappa$	Collateral share for liquidity	0.075
$\kappa_i$	Firm-specific collateral share for liquidity	[0.01; 0.091]
$A$	Productivity shock	1.00
$A_i$	Firm-specific productivity shock	[0.94; 1.07]

steady-state annual gross interest rate of 6.30 percent.<sup>27</sup> The parameter  $\psi$  is set to target an annual steady-state short-term interest rate of 1.2 percent ( $r^L = 1.003$ ) so that the cost of using liquidity,  $r_t^L$ , is lower than the gross interest rate.

The liquidity parameter  $\kappa$  and the credit parameter  $\phi$  are calibrated in order to match two empirical targets, using aggregate data. Precisely, the model has to replicate the mean of the cash ratio and the debt-to-output ratio over the sample, i.e., 3.4 percent and 53 percent, respectively.<sup>28</sup> It follows that steady-state level of financial shocks are set to  $\kappa = 0.075$  and  $\phi = 0.09$ . Finally, we normalize  $A$  to unity.

### B. Dynamic Impact of Aggregate Shocks in the Baseline Model

We start by illustrating the link between employment and the cash ratio in the baseline model described in Section IID. We examine the impulse response functions (IRFs) to a reduction in liquidity ( $\kappa_t$ ), credit ( $\phi_t$ ), and technology ( $A_t$ ) from their steady-state level. Each shock is normalized to generate a 1 percent reduction of output from its steady state, and we set all persistence parameters to 0.8. This parameterization strategy makes the impulse responses comparable and highlights the transmission mechanisms of the shocks irrespective of their intrinsic properties.<sup>29</sup> The IRFs are computed by determining the equilibrium wage,  $w_t$ , that clears the labor market and using, in turn, the policy functions (15) to (19).<sup>30</sup> Figure 3 displays the IRFs of a set of variables in percentage deviation from the steady state. The marker-solid, solid, and dashed lines correspond to a response to  $\kappa_t$ ,  $\phi_t$ , and  $A_t$ , respectively.

<sup>27</sup>The value of  $\beta$  is somewhat low, but it ensures that firms are always constrained. If we set  $\beta = 0.985$  as in Jermann and Quadrini (2012), firms are still constrained in 90 percent of the cases. Notice that the calibrated value of  $\tau$  is in the same order than the average corporate tax rate in the United States in 2015 (see OECD.stat database).

<sup>28</sup>As in Section I, the cash ratio is defined as the share of liquidity to total assets from the nonfinancial corporate business sector. The debt-to-output ratio is measured by the ratio between credit market instruments (liabilities) from the nonfinancial corporate business sector and the gross value added in the business sector. Data sources are available in the online Appendix.

<sup>29</sup>In Section IIIC, we identify model-based shocks series using the data and proceed to a more quantitative assessment of the effect of these shocks on business cycles.

<sup>30</sup>We check that we do have  $w_t < w_t^*$  every period.

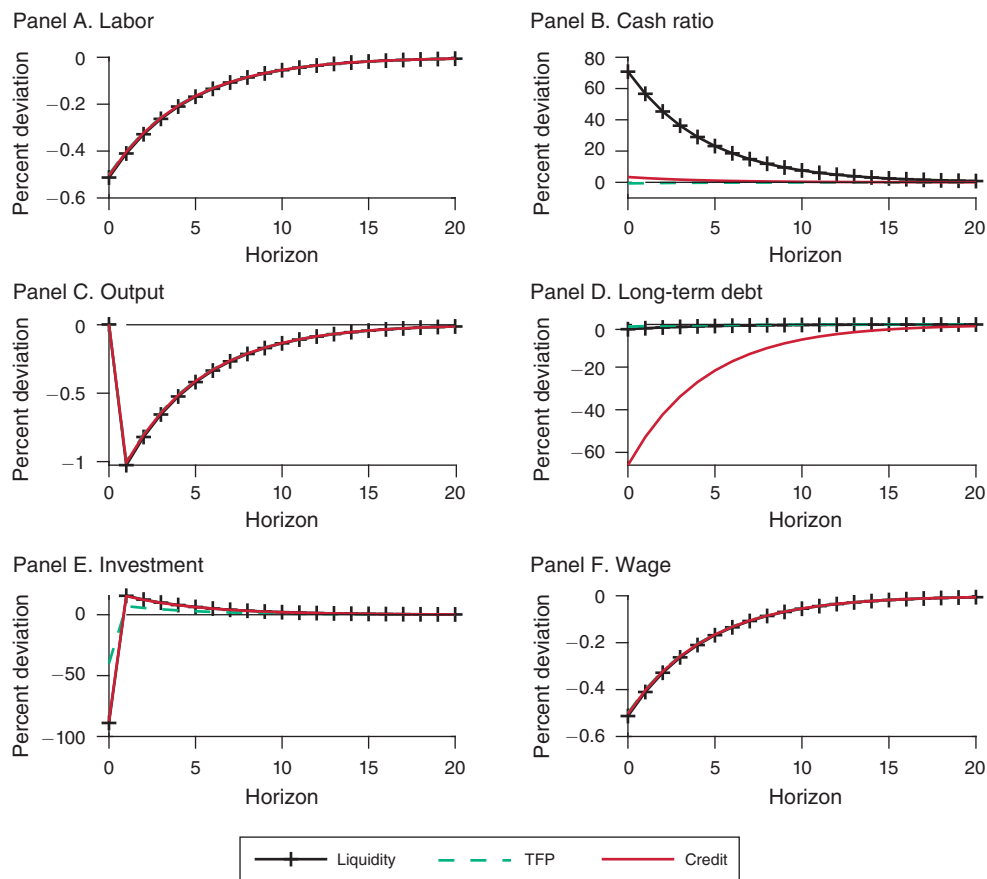


FIGURE 3. IMPULSE RESPONSE FUNCTIONS TO LIQUIDITY, TFP, AND CREDIT SHOCKS IN THE BASELINE MODEL

Notes: The solid lines with markers correspond to the IRFs to an external liquidity shock ( $\kappa$ ). The dashed lines correspond to the IRFs to a TFP shock ( $A$ ). The solid lines correspond to the IRFs to a credit shock ( $\phi$ ). The size of each shock is normalized to generate a 1 percent deviation of output from its steady-state value.

The upper panels in Figure 3 displays the responses of employment and the cash ratio. While the response of labor is identical and negative for the three shocks, the cash ratio reacts strongly to the liquidity shock. Both credit and TFP shocks have barely any impact on the cash ratio. These results coincide with the main mechanism discussed through Corollary 1. Considering a negative liquidity shock, i.e., a decline in  $\kappa_t$ , firms have smaller external liquid funds to pay for wage bills. The cash ratio  $m_t$  rises through two channels. First, there is a direct effect as firms need to compensate for the reduced access to external liquidity by relying more on internal liquidity. Second, there is an indirect collateral effect, since the collateral value of capital is reduced relative to labor, which reduces the value of assets relative to liquidity needs. Altogether, these two channels drive the cash ratio in the same upward direction. In the case of a negative credit shock, only the collateral motive plays a role on the cash ratio, which slightly increases. The reason of this modest increase is that the credit shock does not *directly* affect the structure of the portfolio

between internal and external liquidity. Additionally, a reduction in financial opportunities (i.e., shortage in external liquidity and credit) lowers labor demand through the financial multiplier. Therefore, employment  $l_t$  declines. When it comes to a negative technology shock, the comovement between employment and the cash ratio is different. As explained above, a decline in productivity  $A_t$  raises the capital-labor ratio, which increases in turn the scale of assets as compared to liquidity needs and generates a subtle reduction in the cash ratio. The other effect, more standard, is to decrease employment through a tighter financial multiplier.

As shown in Figure 3, the three recessionary shocks generate a decline in wages and therefore a reduction in liquidity needs. Debt responds mostly to the credit shock although it evolves in the same pattern as output in all experiments, which is in line with Covas and Den Haan (2012) and Jermann and Quadrini (2012) who stress that debt is procyclical. Similarly, investment is initially depressed in response to the three shocks due to the reduction in external financing, but later rebounds to reconstitute the capital stock.<sup>31</sup>

This analysis stresses the transmission channels through which liquidity shocks generate a negative relationship between employment and the cash ratio in the baseline model. For convenience, we assumed that liquidity shocks are known at the beginning-of-period. This implies that these shocks have the same impact on inputs as credit shocks. From equation (14), it can be seen that  $\kappa_t$  and  $\phi_t$  affect in the same way the consolidated budget constraint of the beginning and end-of-period. These timing assumptions are a convenient manner to introduce cash in our model. However, since firms borrow short term at the end-of-period, it seems more natural to assume that liquidity shocks are not observed at the beginning of the period. To understand the specific impact of liquidity shocks on the economy, beyond its link with cash, we therefore assume that  $\kappa_t$  is known only at the end-of-period, that is when liquidity needs arise. We also enrich the model with standard preferences in order to assess quantitatively the role of liquidity shocks in the cycle.

### C. A More General Quantitative Analysis

In the baseline model described in Section IID, the utility of households is linear in consumption ( $\sigma = 0$ ) implying that the long- and short-run interest rates are constant over time. This assumption has the advantage to make the model tractable. We now relax this assumption by allowing  $R_t$  and  $r_t$  to adjust endogenously. To do so,  $\sigma$  is set to 1, which corresponds to a unitary elasticity of intertemporal substitution for households (log-utility). As explained above, we also assume that  $\kappa_t$  is revealed only at the end of period  $t$ , when short-term debt is decided. This assumption allows us to explicitly differentiate the two types of debt since credit can be seen as inter-temporal debt, while liquidity can be seen as intra-temporal debt. As a consequence, the model is fully solved numerically.

<sup>31</sup>Quantitatively, note that the responses of investment, and, in the case of liquidity shocks, of the cash ratio, are very large. However, we cannot assess these magnitudes at this stage, as the shocks magnitudes and persistences are arbitrarily normalized. We will address this issue in Section IIIC, where we use the estimated shock processes.

In this section, we first construct shocks series from the extended model. We then examine their dynamic effect and whether the model fits with some standard features of the data. Finally, we focus on additional model's extensions to check the robustness of our results.

*Model-Based Shocks.*—The theoretical framework is used to construct the three series we are interested in, namely, TFP ( $A_t$ ), liquidity ( $\kappa_t$ ), and credit ( $\phi_t$ ). Let  $\hat{x}_t$  denote the log-deviation of the variable  $x_t$  from its deterministic trend, corresponding to HP-filtered empirical data (detailed below). We assume that the liquidity, short-term, and long-term credit constraints are always binding, and check ex post that it is indeed the case for the estimated shocks series.

For technology, we consider the Cobb-Douglas production function in loglinear terms

$$(29) \quad \hat{A}_t = \left[ \frac{1}{1-\alpha} \right] \hat{Y}_t - \hat{l}_t - \left[ \frac{\alpha}{1-\alpha} \right] \hat{K}_t.$$

For the credit series, we use the loglinearized version of the credit constraint, given by equation (10)

$$(30) \quad \hat{\phi}_t = \hat{r}_t + \hat{D}_t - \hat{K}_t.$$

Finally, the liquidity series is constructed using the liquidity and short-term credit constraints (see equations (7) and (8))

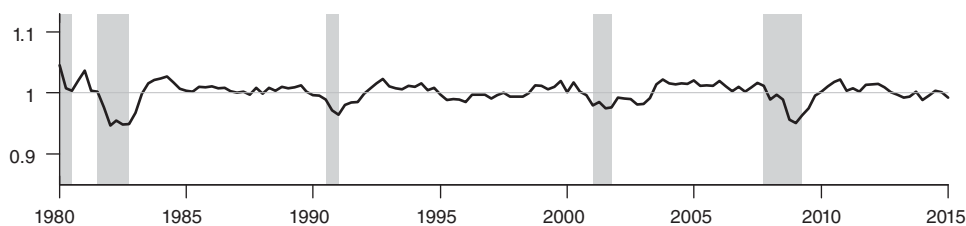
$$(31) \quad \hat{\kappa}_t = \left[ \frac{wl/Y}{(1-\delta)K/Y} \right] \frac{1}{\kappa} (\hat{w}_t + \hat{l}_t) - \left[ \frac{M/Y}{(1-\delta)K/Y} \right] \frac{1}{\kappa} \hat{M}_t - \hat{K}_t.$$

All the parameters are taken from the parameterization and the model's steady state. We use empirical data of output ( $\hat{Y}_t$ ), measured as the gross value added in the business sector from NIPA. The wage bill ( $\hat{w}_t + \hat{l}_t$ ) is measured as the hourly compensation index multiplied by hours worked in the nonfarm business sector from BLS. Debt series ( $\hat{D}_t$ ) is measured by credit market instruments (liabilities) from the nonfinancial corporate business sector from flow of funds. The long-term interest rate,  $\hat{r}_t$ , is measured by the ten-year treasury constant maturity rate. Capital ( $\hat{K}_t$ ) is measured using total capital expenditures and consumption of fixed capital of nonfinancial corporate business sector from flow of funds, as in Jermann and Quadrini (2012). Output,  $\hat{Y}_t$ , is measured as the gross value added of the business sector from NIPA. Cash is defined as the sum of private foreign deposits, checkable deposits and currency, total time and savings deposits, and money market mutual fund shares from flow of funds. Employment is from BLS. All the nominal series are deflated by the price index for gross value added in the business sector from NIPA.<sup>32</sup>

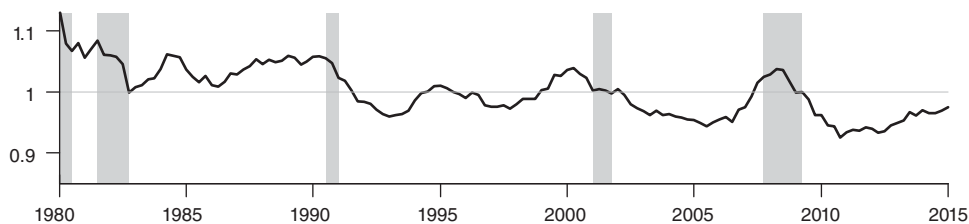
Figure 4 plots the series of TFP, credit, and liquidity, constructed from equations (29)–(31). Over the sample 1980:I to 2015:III, the liquidity series features less

<sup>32</sup>Details on data sources are provided in the online Appendix. All data are at a quarterly frequency.

Panel A. TFP series



Panel B. Credit series



Panel C. External liquidity series

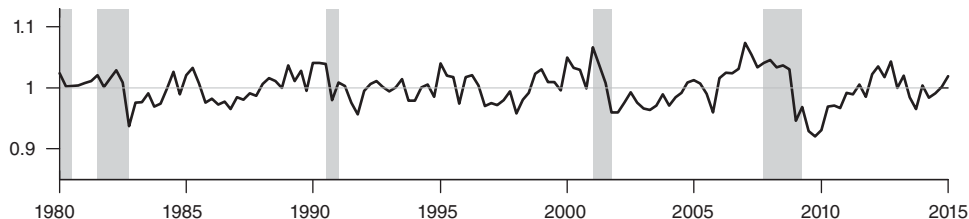


FIGURE 4. MODEL-BASED SHOCKS TO TECHNOLOGY, CREDIT, AND LIQUIDITY

persistence than the credit series and those two are more volatile than productivity.<sup>33</sup> Regarding the recent period, the economy experienced a reduction in  $\hat{\kappa}_t$ , below its trends, which can be viewed as a shortage in external liquidity supply. It peaks at the end of 2008, in the midst of the banking liquidity crisis. It is now a well-known fact that firms drew down on their lines of credits during that period, while banks started restricting new commitments.<sup>34</sup> As a result, firms' effective access to liquidity only started to fall at the beginning of 2009, which is consistent with our liquidity measure. This negative liquidity shock was accompanied by a reduction in  $\hat{\phi}_t$ , interpreted as a negative credit shock. Our model predicts that the Great Recession was mostly driven by financial shocks, i.e., liquidity and credit shocks, rather than a technology shock. This latter result is in line with Jermann and Quadrini (2012), who construct a generic financial shock. Notice, also, that liquidity drops briefly in 2001, during the dot-com bubble. The declines of 1998 and 2006 in our liquidity measure do not, however, seem related to any recession and probably reflect noise

<sup>33</sup>The autoregressive parameters of  $\hat{A}_t$ ,  $\hat{\phi}_t$ , and  $\hat{\kappa}_t$  are respectively 0.78, 0.92, and 0.55, and their variances are 0.03, 0.08, and 0.06.

<sup>34</sup>See Ivashina and Scharfstein (2010), Cornett et al. (2011), and Gilchrist and Zakrajšek (2012).

in our measure. Indeed, this is a coarse measure based on a stylized model, which does not account for all potential drivers of cash.

*Impulse Response Functions and Simulated Model.*—We estimate a SVAR(1) model on  $\hat{\kappa}_t$ ,  $\hat{\phi}_t$ , and  $\hat{A}_t$  using a Choleski decomposition with  $\hat{\kappa}_t$  ordered first and  $\hat{\phi}_t$  second to orthogonalize the three shocks. Using the estimated SVAR model as the data-generating (DGP) process of the shocks, we can then incorporate it into the theoretical model to generate the three shocks, compute IRFs, and simulate the model.<sup>35</sup>

Figure 5 presents the IRFs obtained with the estimated liquidity and credit shocks process. The responses are qualitatively similar to the responses obtained in the baseline model with normalized shocks. Output falls more sharply on impact following a liquidity shock than following a credit shock. This is due both to the higher estimated magnitude of the liquidity shock and to its strong negative effect on employment. Investment increases following a liquidity shock. This is a result of the decline in wage bill, which is reinforced by the strong fall in wages. When wages are sufficiently sticky, investment falls (see online Appendix).

We feed the model with the productivity and financial shock series generated with the estimated SVAR in order to recover the historical path of key macroeconomic variables and to assess the importance of financial shocks to the business cycles. Figure 6 displays the series of output, employment, wages, and short-term loans generated by the model and compares them with their empirical counterpart. For short-term loans, we use a proxy based on bank loans.<sup>36</sup> To complement the analysis, Table 5 provides the correlation between the simulated and the observed series when all structural shocks are included into the model (as in Figure 6) and when only one shock remains.<sup>37</sup>

As shown in Figure 6, simulated output fits quite well the empirical series, with a correlation of 0.65. In particular, the model is able to generate a recession of a strong magnitude in 2008. One could go further in the analysis by investigating the proportion of the fall in GDP during the crisis that can be explained by the three shocks during the Great Recession. We find that liquidity shocks account for a fall of 2.5 percent in GDP out of the 7 percent observed in the second quarter of 2009. As a comparison, credit shocks account for 0.3 percent only. The rest is either due to TFP (3 percent) or is unexplained by the model (1.5 percent). This confirms that liquidity shocks have played an important role during the crisis. Over the whole sample, Table 5 shows that the TFP shock is a key element to explain the historical

<sup>35</sup>Note that, because the TFP, liquidity, and credit series are correlated in the data, the theoretical series generated with the estimated SVAR are also correlated. We take this correlation into account when solving the model. In particular, since  $\hat{\kappa}_t$  is ordered first in the Choleski decomposition, we allow the liquidity shock to comove contemporaneously with  $\hat{\phi}$  and  $\hat{A}$ .

<sup>36</sup>The Survey of Terms of Business Lending provides measures of banking loans to business firms for different maturities. We can therefore extract the short-term loans in the data, which are defined as the total amount of loans provided by domestic banks of a maturity of less than one year. Data are available from 1997:II to 2015:III and are HP-filtered. In the online Appendix, we present the results based on the alternative approach that consists in computing  $\hat{\kappa}_t$  based on this measure of short-term loans for comparison purposes.

<sup>37</sup>Note that these correlations can also be interpreted as the square root of the share of the empirical series that is explained by the model-based series.

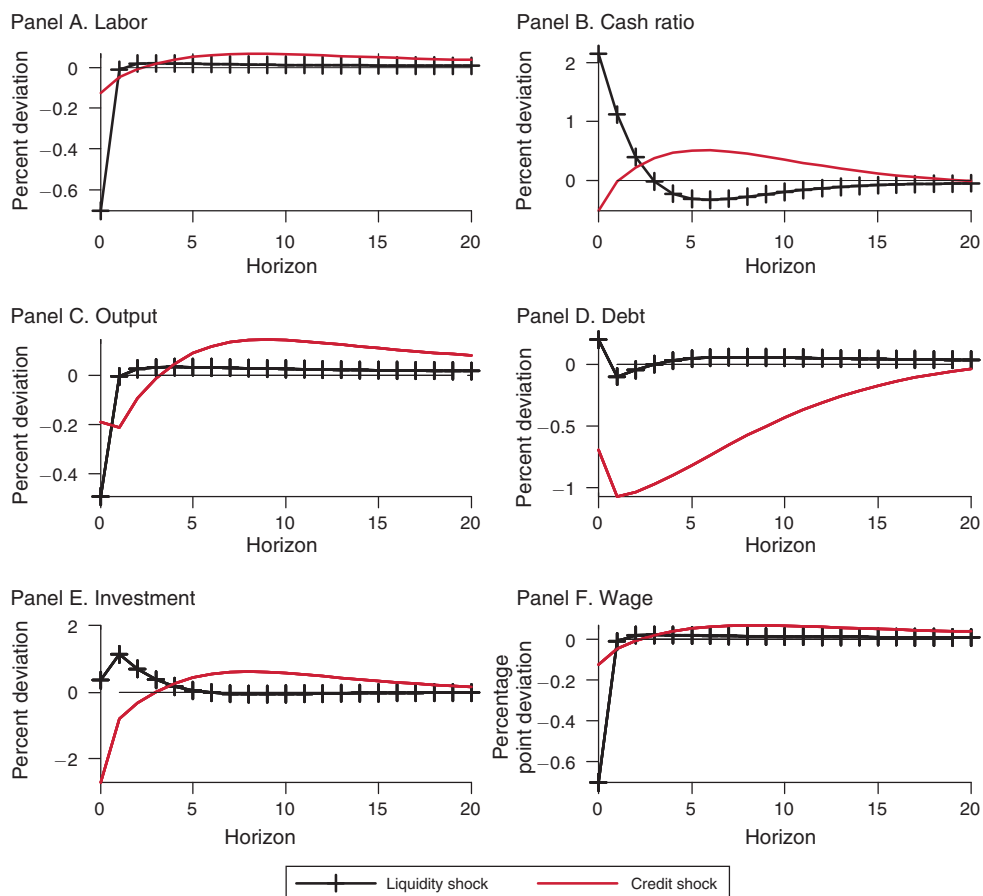


FIGURE 5. IMPULSE RESPONSE FUNCTIONS TO LIQUIDITY AND CREDIT SHOCKS GENERATED BY THE MODEL

Notes: The solid lines with markers correspond to the IRFs to an external liquidity shock ( $\kappa$ ). The solid lines correspond to the IRFs to a credit shock ( $\phi$ ). The size of each shock corresponds to one standard deviation of the estimated shocks. The data-generating process of the shocks corresponds to the estimated SVAR.

path of output since the correlation between the two series is 0.54 if the TFP shock only is included.<sup>38</sup> Figure 6 shows that the model is not able to capture the “jobless recovery” observed in the data after the 90s’ crisis. Apart from that, simulated employment fits well its empirical counterpart with a correlation of 0.42. The model fails to generate realistic movements of the real wage since the correlation is significant only at 10 percent. Despite its simplicity, our model is able to generate a series of external liquid funds that fits well the historical evolution of our measure of short-term loans. The correlation of 0.60 is striking given that short-term loans are not used in the construction of our shocks. Unsurprisingly, the liquidity shock is more appropriate than the credit shock to generate this correlation.<sup>39</sup> This result is

<sup>38</sup>The correlation is 0.36 if both financial shocks are included (not shown).

<sup>39</sup>Nevertheless, our model does not generate enough volatility in short-term loans. Short-term loans might be affected by shocks other than liquidity shocks. Note also that our proxy for short-term loans is not a perfect measure

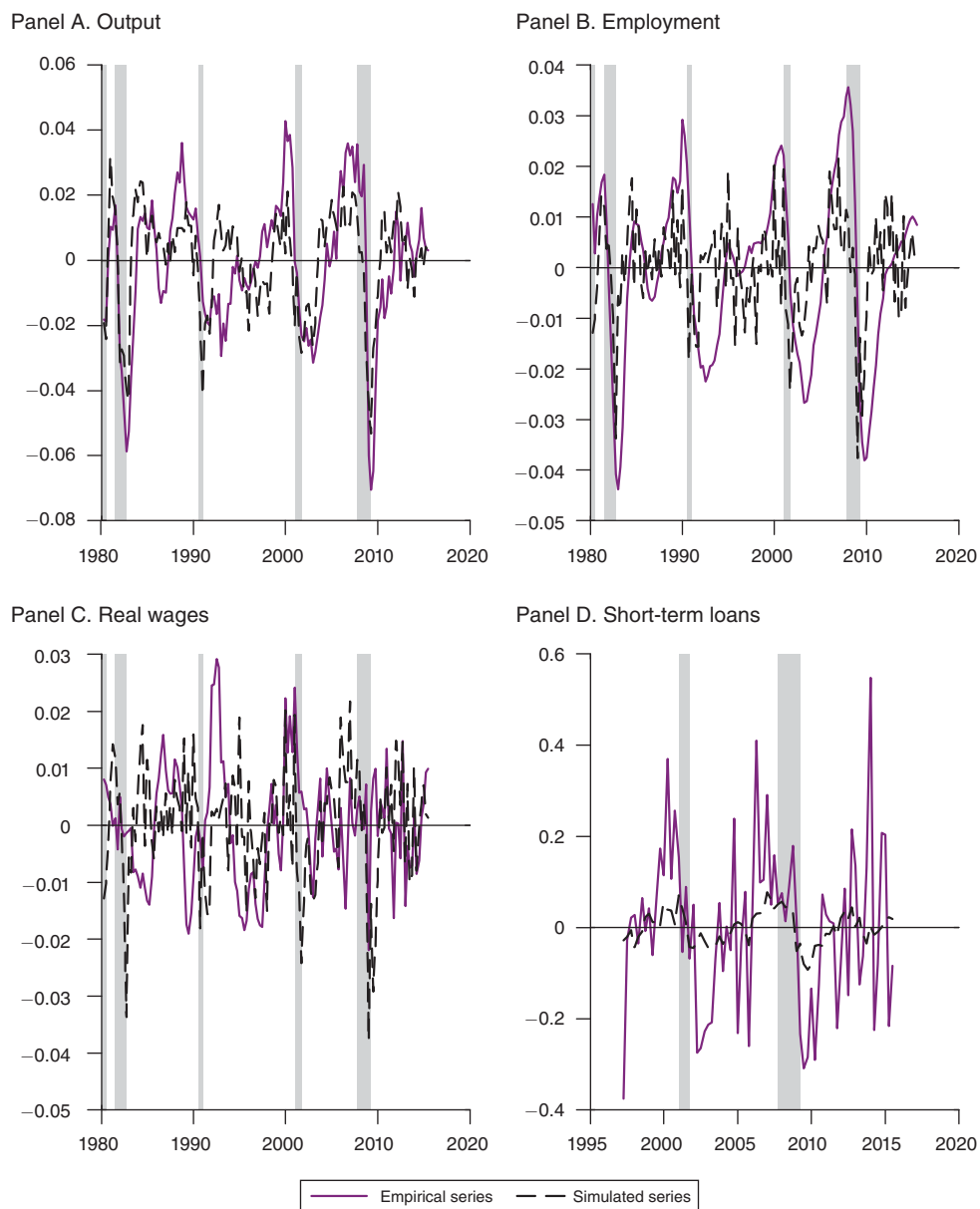


FIGURE 6. SIMULATED AND EMPIRICAL MACROECONOMIC VARIABLES

*Notes:* Empirical output and wages are expressed in real terms, deflated by the price index for gross value added in the business sector. All series are expressed in log and HP-filtered.

even more notable when we look at the cash ratio since the correlation between the two series is 0.80 when the liquidity shock only is included, while the correlation is 0.14 (0.17, respectively) when the credit (TFP, respectively) shock only is included.

of short-term debt, and that bank loans can be substituted with other forms of short-term debt as a response to liquidity shocks.

TABLE 5—CORRELATION BETWEEN EMPIRICAL AND MODEL-BASED SERIES

	All shocks	$\hat{\kappa}_t$ only	$\hat{\phi}_t$ only	$\hat{A}_t$ only
Output	0.65 (0.00)	0.30 (0.00)	0.24 (0.00)	0.54 (0.00)
Employment	0.42 (0.00)	0.21 (0.01)	0.20 (0.02)	0.37 (0.00)
Real wages	0.14 (0.09)	0.16 (0.04)	-0.20 (0.01)	0.13 (0.12)
Short-term loans	0.60 (0.00)	0.48 (0.00)	0.31 (0.01)	0.42 (0.00)
Cash ratio	0.70 (0.00)	0.80 (0.00)	0.14 (0.10)	0.17 (0.04)

Note: *p*-values are in parentheses.

TABLE 6—SHOCKS' CONTRIBUTION TO VOLATILITY

	$\hat{\kappa}_t$	$\hat{\phi}_t$	$\hat{A}_t$
Output	0.27	0.13	0.60
Employment	0.60	0.09	0.31
Cash ratio	0.40	0.12	0.48
Short-term loans	0.73	0.05	0.22

To complete this analysis, we can compute the correlation between two simulated series, namely employment and the cash ratio. It amounts to  $-0.47$ , which matches surprisingly well the data ( $-0.43$ ). This result confirms that the extended model captures the main stylized fact documented in Section I.

*Variance Decomposition.*—Now that we have shown that the extended model does a satisfactory job in replicating empirical data, we investigate by how much each shock contributes to a set of variables' volatility. Table 6 shows the variance decomposition of key variables in the theoretical model.

Financial shocks explain 40 percent of output volatility, while the contribution reaches 69 percent for employment. This result coincides with Jermann and Quadrini (2012) who emphasize that financial shocks are key drivers of macroeconomic fluctuations in a large-scale estimated model. We enrich this finding by arguing that liquidity shocks not only explain a negative correlation between employment and cash ratio, but are also an important source of fluctuations. Unsurprisingly, they explain most of the variability of the short-term loans in our model (73 percent). Moreover, it is worth noticing that 27 percent of output volatility, 60 percent of employment volatility, and 40 percent of cash ratio volatility are explained by liquidity shocks. This can be explained by the high estimated volatility of liquidity shocks and to the model, which features a relatively higher impact of liquidity shocks on the cash ratio, output, and employment, as illustrated in Figure 5.

#### D. Sensitivity Analysis

In this section, we assess the robustness of our results to several extensions. We modify the extended model presented above in several directions by assuming

TABLE 7—SECOND-ORDER MOMENTS COMPARISON

	Data	Benchmark	RWR (1)	Sep. pref. (2)	CES (3)	<i>K</i> Adj. cost (4)
$\sigma_Y$	0.02	0.02	0.02	0.02	0.02	0.02
$\sigma_l/\sigma_Y$	0.95	0.62	0.74	0.62	0.77	0.72
$\sigma_I/\sigma_Y$	4.09	4.83	4.64	5.12	4.36	2.37
$\sigma_w/\sigma_Y$	0.60	0.62	0.46	0.62	0.77	0.71
$\sigma_L/\sigma_Y$	9.93	1.99	1.81	2.01	2.06	1.68
$\text{corr}(\hat{l}_t, \hat{Y}_t)$	0.79	0.57	0.46	0.57	0.50	0.72
$\text{corr}(I_t, \hat{Y}_t)$	0.84	0.88	0.90	0.91	0.63	0.89
$\text{corr}(l_t, \widehat{CR}_t)$	-0.43	-0.47	-0.32	-0.49	-0.79	-0.14

real wage rigidities, separable preferences for households, a CES production function, and capital adjustment costs. Table 7 compares key theoretical moments with their empirical counterparts. We discuss each extension one by one.<sup>40</sup>

*Real Wage Rigidities.*—Liquidity needs, which are central to our analysis, depend on real wage dynamics. In a perfectly competitive environment, wages have a mitigating effect, as they decrease following a negative shock. By introducing real wage rigidities, we affect this liquidity need channel. We follow Blanchard and Galí (2007) by assuming a partial adjustment of the wage:  $\hat{w}_t = \zeta \hat{w}_{t-1} + (1 - \zeta) \widehat{mrs}_t$ , where  $\widehat{mrs}_t$  is the marginal rate of substitution between consumption and leisure. We set the degree of wage rigidity  $\zeta$  to 0.5 as suggested by Blanchard and Galí (2010). As expected, wages are less volatile, which implies that liquidity needs are more sluggish. Lower variation in wages is combined with more volatile employment, which matches the data better. The correlation between employment and cash ratio is lower than in the extended model (-0.32) because real wages decrease by less in response to liquidity shocks, generating eventually a rise in labor demand.

*Separable Utility Function.*—Another way to evaluate the importance of the model's working capital channel is to modify households' preferences. In the extended model, we assume GHH utility function: the reduction in consumption following a recessionary shock is not accompanied with a rise in labor supply, i.e., the wealth effect on labor supply is absent. Therefore, labor supply is only driven by the substitution effect between consumption and leisure implying that consumption and labor go in the same direction. Alternatively, we could assume that households have a separable utility function such that the utility function (23) is replaced by  $v(c^h, l) = \log(c^h) - \bar{w} \frac{l^{1+1/\eta}}{1+1/\eta}$ . We find that the reduction in employment following a negative shock is partially compensated by the negative wealth effect that boosts labor supply. However, the simulated moments are not sensitive to this specification as shown in Table 7.

<sup>40</sup>Figure 4 in the online Appendix plots the variance decomposition of output, employment, and cash ratio for each model's extension. We show that our results are robust. In particular, liquidity shocks about 30 percent of output fluctuation irrespective of the setup we consider.

*CES Production Function.*—We allow the production function to follow a more general CES specification with  $F(K_t, A_t l_t) = \left[ \alpha_k K_t^{\frac{\varpi-1}{\varpi}} + \alpha_l (A_t l_t)^{\frac{\varpi-1}{\varpi}} \right]^{\frac{\varpi}{\varpi-1}}$ , where  $\varpi$  is the elasticity of substitution between capital and labor and  $\alpha_k$  and  $\alpha_l$  are distribution parameters. Notice that the CES production function nests the benchmark Cobb-Douglas case when  $\varpi = 1$  and  $\alpha_k + \alpha_l = 1$ . We set  $\varpi = 0.8$ .<sup>41</sup> Parameters  $\alpha_k$  and  $\alpha_l$  are “re-parameterized” following the strategy suggested by Cantore and Levine (2012) such that  $\alpha_k = \alpha (Y/K)^{\frac{\varpi-1}{\varpi}} = 0.61$  and  $\alpha_l = (1 - \alpha) \times (Y/l)^{\frac{\varpi-1}{\varpi}} = 0.64$ . Table 7 shows that the volatility of all variables is hardly changed by the modification of the production function. The most notable difference is a higher correlation between employment and cash ratio ( $-0.79$ ). The reason for a more negative correlation is the increased contribution of liquidity shocks. With lower substitutability between labor and capital, liquidity shocks play a larger role in explaining employment fluctuations.

*Capital Adjustment Costs.*—As standard in the literature, we finally add capital adjustment costs. The law of motion for capital becomes  $K_t = (1 - \delta) K_{t-1} + I_t - \frac{\Phi}{2} \left( \frac{I_t}{K_{t-1}} - \delta \right)^2 K_{t-1}$ , where  $\Phi \geq 0$  governs the size of the adjustment costs. We calibrate this parameter to  $\Phi = 15$ . Table 7 shows that investment is slightly less volatile than in the benchmark model while the correlation between employment and cash ratio is lower than in the data ( $-0.14$ ). The correlation is less negative since liquidity shocks have a lower contribution to fluctuations: with capital adjustment, employment reacts more to productivity and credit shocks.

### E. Liquidity Uncertainty

Finally, we examine the impact of liquidity uncertainty by allowing for time-varying volatility of liquidity shocks (e.g., in the spirit of Justiniano and Primiceri 2008). We assume that  $\kappa_t$  follows the process  $\log(\kappa_t) = (1 - \rho_\kappa) \times \log(\kappa) + \rho_\kappa \log(\kappa_{t-1}) + \sigma_{\kappa t} \varepsilon_{\kappa t}$ , where  $\rho_\kappa$  measures the persistence of the liquidity shock and  $\sigma_{\kappa t}$  measures the liquidity uncertainty such that  $\log(\sigma_{\kappa t}) = (1 - \rho_\sigma) \times \log(\sigma_\kappa) + \rho_\sigma \log(\sigma_{\kappa t-1}) + \sigma_{\sigma_\kappa} \varepsilon_{\sigma_\kappa}$ .<sup>42</sup> Figure 7 displays the IRFs of key variables to 1 percent rise in liquidity uncertainty.

Facing more uncertainty regarding the availability of external liquid funds, firms have a precautionary saving behavior by increasing the amount of cash they own in their portfolio. They also accumulate more collateral (capital) which, combined with

<sup>41</sup>There is no consensus in the literature regarding the parameterization of elasticity  $\varpi$ . León-Ledesma, McAdam, and Willman (2010) emphasizes the identification issues resulting from the estimation of this parameter. Klump, McAdam, and Willman (2012) provides a survey where it can be shown that the estimated values vary between 0.5 and 0.9 in the literature.

<sup>42</sup>Following Fernández-Villaverde et al. (2011), we make a third-order approximation of the model, which is simulated 2,096 periods when all shocks hit the economy. The first 2,000 periods are dropped to delete the effects of the initial conditions on the simulation and the ergodic mean is computed from the 96 remaining periods. We then compute the effect of the uncertainty shock, by hitting  $\varepsilon_{\sigma_\kappa}$ , in deviation from the ergodic mean. Following Gilchrist, Sim, and Zakrajšek (2014), we set  $\rho_\sigma = 0.9$ , the results being unaffected by this parameterization.

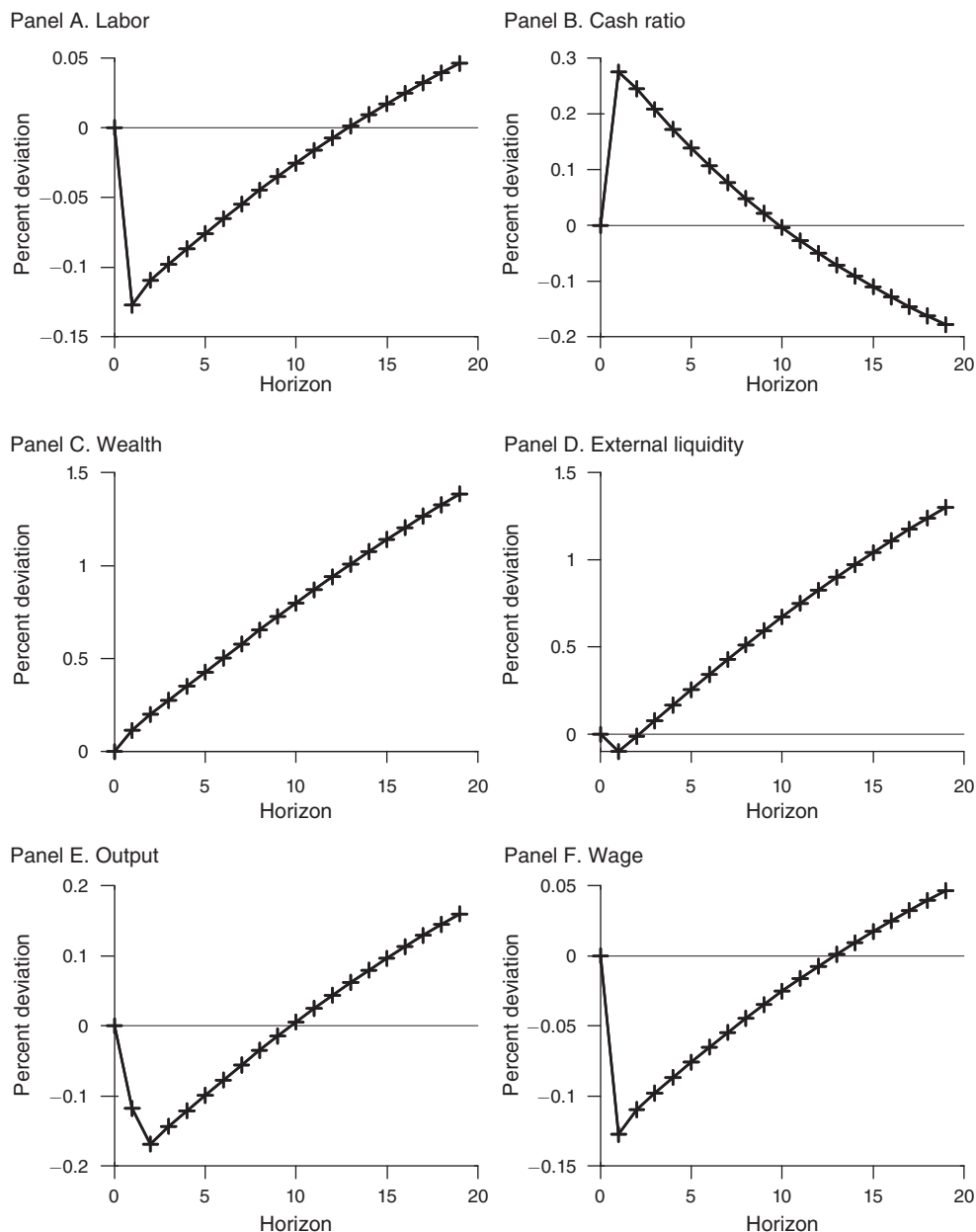


FIGURE 7. IMPULSE RESPONSE FUNCTIONS TO UNCERTAINTY SHOCKS ON LIQUIDITY

*Note:* The shock is a 10 percent deviation from the ergodic mean of the conditional standard deviation of liquidity shocks.

the amount of cash they hold, increases wealth. Ultimately, higher collateral generates an increase in external funds, i.e., long- and short-term debt. Additionally, uncertain perspectives on future liquidity conditions reduce the demand for labor, generating a

drop in wages and a recession.<sup>43</sup> Eventually, the greater financial opportunities and the wealth expansion stimulates employment and output while firms need less cash in their portfolio. This result confirms that liquidity prospects by firms are key to understand the negative comovement between labor and the cash ratio.

#### IV. Cross-Firms Correlations

We now assess whether the baseline model is able to explain the cross-firm evidence of a negative correlation between cash and employment. To examine this issue, we reintroduce heterogeneous firms that are hit by idiosyncratic productivity shocks  $\epsilon_{it}^A$  and liquidity shocks  $\epsilon_{it}^\kappa$ . Instead, we assume for simplicity that the aggregate economy does not fluctuate by setting  $A_t = A$ ,  $\kappa_t = \kappa$ . For simplicity, we assume that credit constraints do not vary across firms and time and set  $\phi_{it} = \phi$ . This is without loss of generality, for two reasons. First, in our empirical analysis, we find a negative correlation even when we control for firm leverage, which is a proxy for the firms' access to credit. Our exercise can be seen as an attempt to generate this residual correlation. Second, according to Corollary 1, credit shocks also drive a negative comovement between cash and labor in partial equilibrium, while productivity shocks drive a positive comovement. Abstracting from credit shocks is therefore a conservative approach, as this makes it more difficult to generate the negative correlation.

Because the capital intensity and financial multiplier differ across firms, the model does not allow for linear aggregation, despite the fact that the policy functions are linear at the individual level. Therefore, we use a numerical method to solve the model.

##### A. Calibration

Beside the parameterization described previously, we aim at calibrating a range for  $\kappa_{it} = \kappa + \epsilon_{it}^\kappa$  and  $A_{it} = A + \epsilon_{it}^A$ . We assume that these shocks can take ten equidistant possible realizations. The two shocks are assumed to follow an independent first-order Markov process with transition probability of 0.25/9. More precisely, each firm has a probability of 75 percent to stay in the same state for  $\kappa(A)$  and a probability of 25 percent to switch to one of the nine other states, with an identical probability for each of these states. We calibrate the range for  $\kappa_{it}$  and  $A_{it}$  (namely, we set the minimum and maximum values) to match some distribution moments observed at the firm level. Table 8 provides the interquartile values to match, computed from the Compustat database described in Section I. The range of the idiosyncratic liquidity and productivity shocks  $\kappa_{it}$  and  $A_{it}$  are set to reproduce the interquartile ratio for our two variables of interest, namely the cash ratio and employment. This implies  $\kappa_{it} \in [0.01; 0.091]$  and  $A_{it} \in [0.94; 1.07]$ . All the other parameters are parametrized as described in Section IIIA. The numerical

<sup>43</sup>This result contrasts with the literature, which looks at uncertainty for TFP shocks. In the standard RBC model, in response to more uncertain future economic conditions, households save more and supply more labor, which, under a perfectly competitive labor market, leads to a rise in output (see Basu and Bundick 2012).

TABLE 8—SIMULATED MOMENTS

Benchmark calibration		Data	Model
$\frac{m_{75\%}}{m_{25\%}}$	Interquartile ratio of $m$	10.04	8.79
$\frac{l_{75\%}}{l_{25\%}}$	Interquartile ratio of $l$	1.47	1.45
$\text{corr}(m, l)$	Correlation(cash ratio, labor)	-0.22	-0.13
Average value of labor and cash ratio by class of firms		$l$	$m$
$\Omega_i$	Bottom 50%	0.67	0.03
	Top 50%	1.05	0.03
$\kappa_i$	Bottom 50%	0.77	0.05
	Top 50%	0.81	0.01
$A_i$	Bottom 50%	0.74	0.02
	Top 50%	0.84	0.03

Notes: In the upper panel, the empirical correlation between  $m$  and  $l$  is computed after removing the firm-specific linear trend from data. In the lower panel, all the values of labor and the cash ratio are weighted by the distribution probability.

method to obtain the steady-state wage and distribution of firms is described in the online Appendix.

## B. Results

The upper panel of Table 8 displays firm-level moments computed from the stationary distribution. Interestingly, our stylized model provides a negative cross-firm correlation between the cash ratio and employment, equal to  $-0.13$  under our benchmark calibration. This number is somewhat smaller than the unconditional correlation found in the data ( $-0.22$ ).

To understand this result, Figure 8 shows, for two different values of  $A_{it}$ , the impact of an idiosyncratic innovation of  $\kappa_{it}$  on the value of the labor normalized by wealth ( $l_{it}/\Omega_{it}$ ) and the cash ratio ( $m_{it}$ ), both weighted by the distribution probability.

This figure shows that, as  $\kappa_{it}$  decreases, the cash ratio is higher and labor is lower for a given  $\Omega_{it}$ . Differently, firms facing a negative productivity shock adjust both labor and the cash ratio downward. Consequently, even though the two shocks predict an opposite correlation between employment and the cash ratio, our calibrated liquidity shock is strong enough to generate a reasonable negative correlation. When the amount of liquid funds is reduced, firms are able to finance less labor with the same amount of cash. To accommodate for this shock, they both accumulate more cash in order to pay for the wage bill and diminish their level of labor to limit the wage bill.

However, while the normalized labor ( $l_{it}/\Omega_{it}$ ) is independent of  $\Omega_{it}$  according to Proposition 1, the level of labor  $l_{it}$  is driven by the size of the firm  $\Omega_{it}$ , which depends on the history of shocks. As a consequence, the correlation between the cash ratio and labor is determined not only by  $A_{it}$  and  $\kappa_{it}$  as suggested by Figure 8, but also by  $\Omega_{it}$ . The lower panel of Table 8 complements the previous figure by showing the weighted value of these variables by class of firms. While firms with a level of wealth below median have on average a substantially lower level of employment than firms with a level of wealth above median, their cash ratio is about the same on

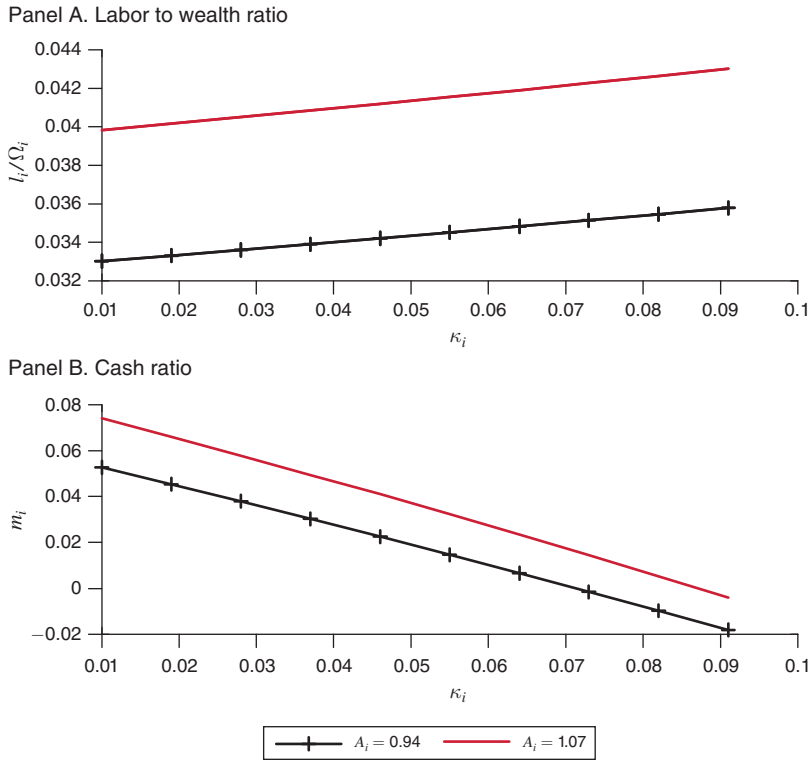


FIGURE 8. VALUE OF THE LABOR TO WEALTH RATIO ( $l_i/\Omega_i$ ) AND THE CASH RATIO ( $m_i$ )

Note: All values of  $l_i/\Omega_i$  and  $m_i$  are weighted by the distribution probability.

average. On the one hand, idiosyncratic innovations on liquidity ( $\kappa$ ) and technology ( $A$ ) affect the cash ratio and labor, as shown in Figure 8. On the other hand, they also affect firms' wealth and therefore employment for a given level of cash. This heterogeneity of wealth generates noise that further dampens the correlation.

We can further use our simulated micro data to determine whether the model is consistent with the stylized facts described in Section I. Table 9 shows that, when run on our simulated data, regressions in the spirit of Table 1 give qualitatively similar results, even though the magnitude of coefficients is smaller.<sup>44</sup> Namely, higher cash ratios are typically associated with lower unemployment, even when we control for the level of sales and for lagged employment (columns 1 and 2).

Moreover, in Section I we have shown that, while employment is negatively correlated with cash contemporaneously, it is positively correlated with lagged cash (see column 4 of Table 2). Using our simulated data, we can show that this is consistent with our model. Indeed, as it appears in column 3, the lagged cash ratio

<sup>44</sup> Since our firms are identical ex ante and we have no aggregate shocks, we do not need to introduce time or individual fixed effects. The regressions are run on 10,000,000 observations that correspond to all the possible combinations of  $\Omega_{t-1}$  (1,000 grid points),  $(\kappa_{t-1}, A_{t-1})$  ( $10 \times 10$ ) and  $(\kappa_t, A_t)$  ( $10 \times 10$ ). These variables are enough to determine all the firms' outcomes that are used in the regressions. Each observation is weighted by the distribution probability.

TABLE 9—ESTIMATION ON SIMULATED DATA

Dependent variable: $\log(l_{it})$	(1)	(2)	(3)
$\left(\frac{M}{M+K}\right)_{it}$	-0.022 (0.00)	-0.025 (0.00)	-0.038 (0.00)
$\left(\frac{M}{M+K}\right)_{it-1}$			0.016 (0.00)
$\log(Y_{it-1})$	0.997 (0.00)	0.997 (0.00)	0.996 (0.00)
$\log(l_{it-1})$		0.031 (0.00)	0.032 (0.00)

Note: Robust standard errors are in brackets.

is positively related to employment. In our model, this comes from the fact that cash helps firms relax their credit constraints. These results suggest that cash must indeed be playing that role.

## V. Conclusion

This paper has documented a negative comovement between the corporate cash ratio and employment. Even though such a relationship may appear surprising at first sight, we show that it can be explained by liquidity shocks. These shocks make production less attractive or more difficult to finance, while they also generate a need for liquidity necessary to pay wage bills, which can be satisfied by holding more cash. Moreover, we argue that our analysis is useful in understanding the motives for firms' cash holdings and in shedding light on the dominant shocks during the financial crisis.

The simple model developed in this paper could be extended to analyze the role of corporate liquidity in a macroeconomic environment. Several extensions could be of interest. First, one limit of our approach is that liquidity is driven by exogenous shocks. It would thus be of interest to model mechanisms through which the supply of liquidity varies endogenously. Second, the model could be used to examine longer term developments. The model would actually be consistent with the documented gradual increase in cash holdings if we assume changes in the production process that imply more end-of-period payments (e.g., with more extensive use of just-in-time technologies as reported in Gao 2018, or with an increase in production outsourcing). Third, for a better analysis of the financial crisis, it would be of interest to introduce demand shocks. Finally, the role of policy intervention would be a natural extension. The last two extensions would be related to the existing DSGE literature incorporating working capital to study monetary policy.

## REFERENCES

- Acharya, Viral V., Heitor Almeida, and Murillo Campello. 2013. "Aggregate Risk and the Choice between Cash and Lines of Credit." *Journal of Finance* 68 (5): 2059–2116.
- Aghion, Philippe, George-Marios Angeletos, Abhijit Banerjee, and Kalina Manova. 2010. "Volatility and Growth: Credit Constraints and the Composition of Investment." *Journal of Monetary Economics* 57 (3): 246–65.

- Almeida, Heitor, Murillo Campello, and Michael S. Weisbach.** 2004. "The Cash Flow Sensitivity of Cash." *Journal of Finance* 59 (4): 1777–1804.
- Almeida, Heitor, Murillo Campello, Igor Cunha, and Michael S. Weisbach.** 2014. "Corporate Liquidity Management: A Conceptual Framework and Survey." *Annual Review of Financial Economics* 6: 135–62.
- Armenter, Roc, and Viktoria Hnatkovska.** 2017. "Taxes and Capital Structure: Understanding Firms' Savings." *Journal of Monetary Economics* 87: 13–33.
- Azar, José A., Jean-François Kagy, and Martin C. Schmalz.** 2016. "Can Changes in the Cost of Carry Explain the Dynamics of Corporate 'Cash' Holdings?" *Review of Financial Studies* 29: 2194–2240.
- Bacchetta, Philippe, and Kenza Benhima.** 2019. "Corporate Cash and Employment: Dataset." *American Economic Journal: Macroeconomics*. <https://doi.org/10.1257/mac.20150191>.
- Bacchetta, Philippe, and Kenza Benhima.** 2015. "The Demand for Liquid Assets, Corporate Saving, and International Capital Flows." *Journal of the European Economic Association* 13 (6): 1101–35.
- Basu, Susanto, and Brent Bundick.** 2012. "Uncertainty Shocks in a Model of Effective Demand." NBER Working Paper 18420.
- Bates, Thomas W., Kathleen M. Kahle, and René M. Stulz.** 2009. "Why Do U.S. Firms Hold So Much More Cash Than They Used to?" *Journal of Finance* 64 (5): 1985–2021.
- Benmelech, Efraim, Nittai K. Bergman, and Amit Seru.** 2011. "Financing Labor." NBER Working Paper 17144.
- Bentolila, Samuel, Marcel Jansen, and Gabriel Jiménez.** 2018. "When Credit Dries up: Job Losses in the Great Recession." *Journal of the European Economic Association* 16 (3): 650–95.
- Blanchard, Olivier, and Jordi Galí.** 2007. "Real Wage Rigidities and the New Keynesian Model." *Journal of Money, Credit and Banking* 39 (S1): 35–65.
- Blanchard, Olivier, and Jordi Galí.** 2010. "Labor Markets and Monetary Policy: A New Keynesian Model with Unemployment." *American Economic Journal: Macroeconomics* 2 (2): 1–30.
- Boeri, Tito, Pietro Garibaldi, and Espen R. Moen.** 2013. "Financial Shocks and Labor: Facts and Theories." *IMF Economic Review* 61 (4): 631–63.
- Boileau, Martin, and Nathalie Moyen.** 2016. "Corporate Cash Holdings and Credit Line Usage." *International Economic Review* 57 (4): 1481–1506.
- Bolton, Patrick, Hui Chen, and Neng Wang.** 2013. "Market Timing, Investment, and Risk Management." *Journal of Financial Economics* 109 (1): 40–62.
- Campello, Murillo, Erasmo Giambona, John R. Graham, and Campbell R. Harvey.** 2011. "Liquidity Management and Corporate Investment during a Financial Crisis." *Review of Financial Studies* 24 (6): 1944–79.
- Cantore, Cristiano, and Paul Levine.** 2012. "Getting Normalization Right: Dealing with 'Dimensional Constants' in Macroeconomics." *Journal of Economic Dynamics and Control* 36 (12): 1931–49.
- Chari, Varadarjan V., Lawrence J. Christiano, and Patrick J. Kehoe.** 2008. "Facts and Myths about the Financial Crisis of 2008." Federal Reserve Bank of Minneapolis Working Paper 666.
- Chen, Peter, Loukas Karabarbounis, and Brent Neiman.** 2017. "The Global Rise of Corporate Saving." *Journal of Monetary Economics* 89: 1–19.
- Chodorow-Reich, Gabriel.** 2014. "The Employment Effects of Credit Market Disruptions: Firm-Level Evidence from the 2008–09 Financial Crisis." *Quarterly Journal of Economics* 129 (1): 1–59.
- Christiano, Lawrence J., and Martin Eichenbaum.** 1995. "Liquidity Effects, Monetary Policy, and the Business Cycle." *Journal of Money, Credit and Banking* 27 (4): 1113–36.
- Christiano, Lawrence J., Mathias Trabandt, and Karl Walentin.** 2010. "DSGE Models for Monetary Policy." In *Handbook of Monetary Economics*, Vol. 3, edited by Benjamin M. Friedman and Michael Woodford, 285–367. Amsterdam: North-Holland.
- Cornett, Marcia Millon, Jamie John McNutt, Philip E. Strahan, and Hassan Tehranian.** 2011. "Liquidity Risk Management and Credit Supply in the Financial Crisis." *Journal of Financial Economics* 101 (2): 297–312.
- Covas, Francisco, and Wouter J. Den Haan.** 2011. "The Cyclical Behavior of Debt and Equity Finance." *American Economic Review* 101 (2): 877–99.
- Covas, Francisco, and Wouter J. Den Haan.** 2012. "The Role of Debt and Equity Finance over the Business Cycle." *Economic Journal* 122 (565): 1262–86.
- Cui, Wei, and Sören Radde.** 2015. "Search-Based Endogenous Illiquidity and the Macroeconomy." [https://economicsdynamics.org/meetpapers/2015/paper\\_546.pdf](https://economicsdynamics.org/meetpapers/2015/paper_546.pdf).
- Eisfeldt, Andrea L., and Tyler Muir.** 2016. "Aggregate External Financing and Savings Waves." *Journal of Monetary Economics* 84: 116–33.

- Falato, Antonio, Dalida Kadyrzhanova, and Jae W. Sim.** 2013. "Rising Intangible Capital, Shrinking Debt Capacity, and the US Corporate Savings Glut." Finance and Economics Discussion Series (FEDS) Federal Reserve Board Working Paper 2013-67.
- Falato, Antonio, and Jae W. Sim.** 2014. "Why Do Innovative Firms Hold So Much Cash? Evidence from Changes in State R&D Tax Credits." Finance and Economics Discussion Series (FEDS) Federal Reserve Board Working Paper 2014-72.
- Fernández-Villaverde, Jesús, Pablo Guerrón-Quintana, Juan F. Rubio-Ramírez, and Martín Uribe.** 2011. "Risk Matters: The Real Effects of Volatility Shocks." *American Economic Review* 101 (6): 2530–61.
- Gao, Xiodan.** 2018. "Corporate Cash Hoarding: The Role of Just-in-Time Adoption." *Management Science* 64 (10): Article 23.
- Gilchrist, Simon, and Egon Zakrajšek.** 2012. "Bank Lending and Credit Supply Shocks." In *Global Macro Economy and Finance*, edited by Franklin Allen, Masahiko Aoki, Jean-Paul Fitoussi, Nobuhiro Kiyotaki, Roger Gordon, and Joseph E. Stiglitz, 154–76. Basingstoke: Palgrave Macmillan.
- Gilchrist, Simon, Jae W. Sim, and Egon Zakrajšek.** 2014. "Uncertainty, Financial Frictions, and Investment Dynamics." National Bureau of Economic Research (NBER) Working Paper 20038.
- Hennessy, Christopher A., and Toni M. Whited.** 2005. "Debt Dynamics." *Journal of Finance* 60 (3): 1129–65.
- Holmström, Bengt, and Jean Tirole.** 2011. *Inside and Outside Liquidity*. Cambridge, MA: MIT Press.
- Hugonnier, Julien, Semyon Malamud, and Erwan Morellec.** 2015. "Credit Market Frictions and Capital Structure Dynamics." *Journal of Economic Theory* 157: 1130–58.
- Ivashina, Victoria, and David Scharfstein.** 2010. "Bank Lending during the Financial Crisis in 2008." *Journal of Financial Economics* 97 (3): 319–38.
- Jermann, Urban, and Vincenzo Quadrini.** 2012. "Macroeconomic Effects of Financial Shocks." *American Economic Review* 102 (1): 238–71.
- Justiniano, Alejandro, and Giorgio E. Primiceri.** 2008. "The Time-Varying Volatility of Macroeconomic Fluctuations." *American Economic Review* 98 (3): 604–41.
- Kahle, Kathleen M., and René M. Stulz.** 2013. "Access to Capital, Investment, and the Financial Crisis." *Journal of Financial Economics* 110 (2): 280–99.
- Kiyotaki, Nobuhiro, and John Moore.** 2012. "Liquidity, Business Cycles, and Monetary Policy." NBER Working Paper 17934.
- Klump, Rainer, Peter McAdam, and Alpo Willman.** 2012. "The Normalized CES Function: Theory and Empirics." *Journal of Economic Surveys* 26 (5): 769–99.
- León-Ledesma, Miguel, Peter McAdam, and Alpo Willman.** 2010. "Identifying the Elasticity of Substitution with Biased Technical Change." *American Economic Review* 100 (4): 1330–57.
- Lins, Karl V., Henri Servaes, and Peter Tufano.** 2010. "What Drives Corporate Liquidity? An International Survey of Cash Holdings and Lines of Credit." *Journal of Financial Economics* 98 (1): 160–76.
- Mehrotra, Neil, and Dmitriy Sergeyev.** 2016. "Financial Shocks and Job Flows." [https://bfi.uchicago.edu/sites/default/files/file\\_uploads/JCJD.pdf](https://bfi.uchicago.edu/sites/default/files/file_uploads/JCJD.pdf).
- Melcangi, Davide.** 2016. "Firms' Precautionary Savings and Employment during a Credit Crisis." <http://eprints.lse.ac.uk/86237/1/CFMDP2016-10-Paper.pdf>.
- Monacelli, Tommaso, Vincenzo Quadrini, and Antonella Trigari.** 2011. "Financial Markets and Unemployment." NBER Working Paper 17389.
- Pagano, Marco, and Giovanni Pica.** 2012. "Finance and Employment." *Economic Policy* 27 (69): 5–55.
- Petrosky-Nadeau, Nicolas, and Etienne Wasmer.** 2013. "The Cyclical Volatility of Labor Markets under Frictional Financial Markets." *American Economic Journal: Macroeconomics* 5 (1): 193–221.
- Stockman, Alan C.** 1981. "Anticipated Inflation and the Capital Stock in a Cash-in-Advance Economy." *Journal of Monetary Economics* 8 (3): 387–93.
- Sufi, Amir.** 2009. "Bank Lines of Credit in Corporate Finance: An Empirical Analysis." *Review of Financial Studies* 22 (3): 1057–88.
- Wasmer, Etienne, and Philippe Weil.** 2004. "The Macroeconomics of Labor and Credit Market Imperfections." *American Economic Review* 94 (4): 944–63.
- Woodford, Michael.** 1990. "Public Debt as Private Liquidity." *American Economic Review* 80 (2): 382–88.